



*Providing excellent customer service;
Creating manufactured solutions for the user;
Investing in distributor relationships—*

*Choose **PCI** as your material handling
component supplier.*

PCI®, ProCal Inc.

www.pcimfg.com

Toll Free 800.323.0966

PRODUCT OFFERING



PNEUMATIC CLUTCHES & BRAKES

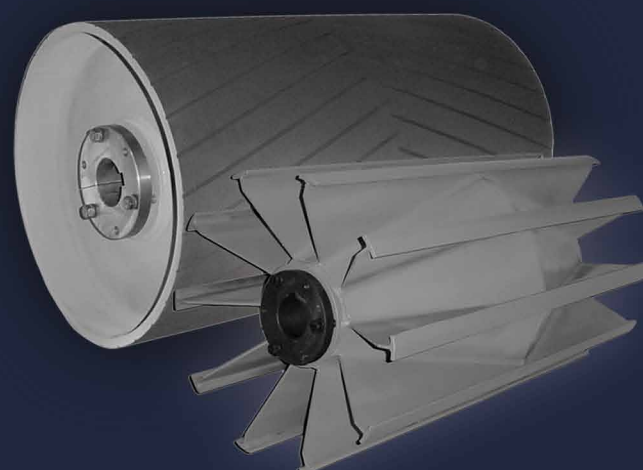
- Components designed for zone or accumulation live roller systems
- Cycles- no more than 5 cycles per minute

CONVEYOR PULLEYS & ACCESSORIES

- Unit/Package Handling Pulleys
 - Formed Gauge Wall Series Pulleys
 - “Manufactured with a Trapezoidal Crown for maximum concentricity and reduced belt wear”
 - Machined Heavy Wall Series Pulleys
- Stainless Steel Drum & Wing Pulleys
 - 4 distinctive stainless steel classes to provide “Stainless Selection and Solutions Simplified”
- Heavy Duty Drum & Wing Pulleys
- Mine Duty Drum & Wing Pulleys
- Spiral Drum & Wing Pulleys
- Deflection Wheels
- Shafting
- Take-Up Frames & Covers
- Custom Configurations

LAGGING & COATING

- Vulcanized Rubber Lagging
- Cold Bond Lagging
- Holz® Replaceable Slide Lagging
- Wing Tip Lagging
- Food Grade Lagging
- Ceramic Lagging
- Urethane Coatings



LOAD BEARING ROLLER ASSEMBLIES

PRE-ENGINEERED TRACK ROLLERS & CAM FOLLOWERS

- Directly interchangeable with industry standards
- Bearing options: Ball, Tapered, Needle, and Double-Row Cylindrical Roller Bearings
- Roller Body Profiles: Crowned, Flanged, V-Groove, U-Groove, Channel & I-Beam

EXTREME DUTY SOLUTIONS INCLUDE:

- 316 Stainless Steel
- Non-Metallic
- High Temperature – 350F
- Regreasable

MODIFIED ROLLER DESIGNS

- 1 Week Standard Delivery
- Common modifications include:
 - Custom relubrication provisions
 - Custom crown profiles
 - Custom grooves
 - Special lubricant

MADE-TO-ORDER DESIGNS

- Industry Leading Standard Delivery
- Toll-Free personalized application assistance
- Unique item specification numbers make for easy ordering
- PCI makes Custom Roller Solutions a reality, call us today



The following are just a few of the many industries where PCI products can be found:



FOOD & PHARMACEUTICAL

- *Harvesting Equipment*
- *Packaging & Processing Conveyors*



AGGREGATE/MINING

- *Cement*
 - Concrete Batch Feeding Systems
 - Hot Clinker Apron Conveyor
- *Sand & Gravel*
 - Telescoping Conveyors & Stackers
 - Screening Systems
- *Oil & Petrochemical*
 - Coiled Tubing Injection Systems
 - Power Tongs
- *Coal*
 - Feeders, Hoppers, Bins & Gates



METALS

- *Foundries*
 - Mold Handling Equipment
- *Steel Mills*
 - Heat Treat Furnaces
- *Recycling-Scrap Yards*
 - Shredders



LUMBER

- *Pulp & Paper Mills*
- *Sawmills*
 - Planers & Sanders
 - Log Handling Equipment
- *Lumber Treatment Facilities*
 - Transfer Carts
 - Transitional Conveyors



MISC.

- *Power Generation*
- *Waste Recycling*
- *Construction*
- *Distribution & Warehousing*
- *Transportation*
- *Entertainment*
- *And more...*



PCI[®], ProCal Inc.

www.pcimfg.com

e-mail: sales@pcimfg.com or drawings@pcimfg.com

Phone: 989.358.7070 Fax: 989.358.7075

Toll Free 800.323.0966