



Double-Row Cylindrical Bearing Roller Assemblies

Heavy Stud DCB Roller Assembly



Minimum 70% Greater Stud Capacity*

500% Greater Grease Capacity*

Improved Sealing*

Shock Load Protection*

Directly Interchangeable with Heavy Stud Cam Follower designs

**When compared to competitive standard stud Cam Follower designs*

PROBLEM

A Cam Follower appears to be suited for the loads of an application but is experiencing inadequate performance or premature failure. The Cam Follower may require excessive grease, may become noisy while operating, or the failure mode can be described as:



Cam Follower Seizes Develops Flat Spots



Roller Body Cracks or Shatters



Catastrophic Failure of the Bearing

SOLUTION

PCI Heavy Stud DCB Rollers provide maximum stud capacities coupled with an optimized internal design to yield maximum life. PCI Heavy Stud DCB Roller will keep you rolling in the most demanding applications. Call us at 989.358.6148 for personal selection assistance.

PCI[®], ProCal Inc.

www.pcimfg.com

e-mail: sales@pcimfg.com or

drawings@pcimfg.com

Phone: 989.358.7070 Fax: 989.358.7075

Toll Free 800.323.0966

Available Through A Distributor In Your Area

PCI Products are Proudly MADE IN THE USA

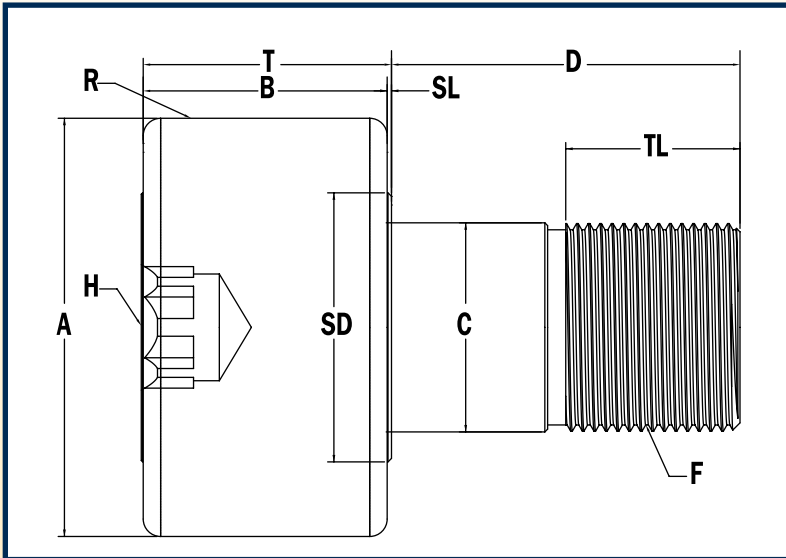
"HPDC" Series DCB Roller Assembly

Double Row Cylindrical Bearing - Heavy Stud Type - Sealed



www.pcimfg.com

800.323.0966



PCI NOMENCLATURE

HPDC - Plain Body Profile - Heavy Stud

HCDC - Crowned Body Profile - Heavy Stud

Stud Type Roller	A	B	C	D	TL	F	SD	SL	T	H
	Roller Dia. +.000 -.001	Roller Width	Stud Dia. +.000 -.001	Stud Length	Thread Length	Fine Threads	Shoulder Dia.	Shoulder Length	Roller Width + Shoulder Length	Hex Size
HPDC-3.00	3.000	1.75	1.500	2.50	1.25	1 1/2 - 12	1.9	.03	1.78	3/4
HPDC-3.25	3.250	1.75	1.500	2.50	1.25	1 1/2 - 12	1.9	.03	1.78	3/4
HPDC-3.50	3.500	2.00	1.750	2.75	1.38	1 3/4 - 12	2.1	.03	2.03	3/4
HPDC-4.00	4.000	2.25	2.000	3.50	1.50	2 - 12	2.3	.03	2.28	3/4
HPDC-5.00	5.000	2.75	2.500	5.06	2.56	2 1/2 - 12	2.9	.06	2.81	7/8
HPDC-6.00	6.000	3.25	3.000	6.00	3.00	3 - 12	3.6	.06	3.31	1
HPDC-7.00	7.000	3.75	3.500	7.68	4.13	3 1/2-4 UNC	4.1	.06	3.81	1 1/4

Roller Diameter	Basic Dynamic Load Rating (Lbs) C	Basic Static Load Rating (lbs) C ₀	Stud Capacity (lbs)	Max. Clamping Torque (in/lbs)*	Approx. Roller Weight (Lbs)
3.00"	27,600	38,000	36,562	3450	4.5
3.25"	27,600	38,000	36,562	3450	5
3.50"	36,000	50,100	51,021	4200	7
4.00"	47,200	67,200	67,926	5000	10
5.00"	71,000	104,700	106,712	5000	21
6.00"	102,000	155,500	157,080	5000	36
7.00"	132,000	204,800	217,251	5000	65

Additional Notes

250°F maximum operating temperature

For lubricated threads, use half the maximum clamping torque value shown.

For Regreasable provisions in the roller and stud end, add a "-R" to the end of the part number.

Example: HPDC-3.00-R

For Hex provisions in the stud end, add a "-H" to the end of the part number.

Example: HPDC-3.00-H

For High Temperature provisions (up to 350°F), add a "-HT" to the end of the part number.

Example: HPDC-3.00-HT