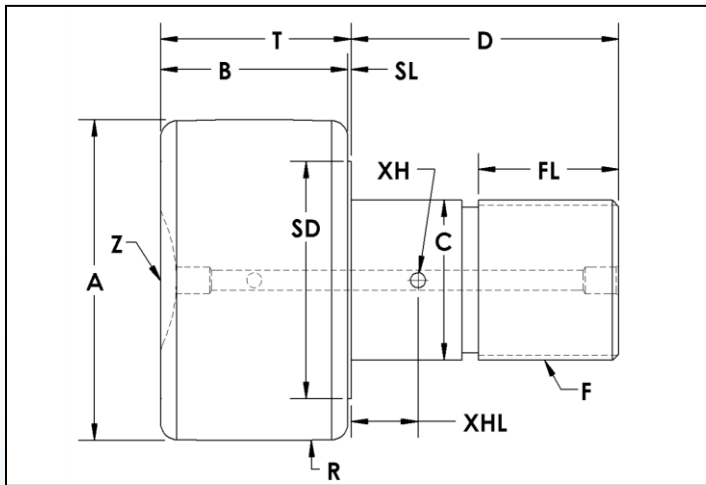


HCCF-S Series Cam Follower Assembly

Crowned/Spherical – Heavy Stud Type Concentric – Screwdriver Slot
Full Complement Needle Bearings - Regreasable

PCT[®]
989.358.6148
www.pcimfg.com



Stud Type Cam Follower Part Number	A	B	C	D	F	FL	R	SD	SL	T	XH	XHL	Z
	Roller Dia. +.000 -.001	Roller Width	Stud Dia. +.000 -.001	Stud Length	Thread Size	Thread Length	Crown Radius	Shoulder Dia.	Shoulder Length	Roller Width + Shoulder Length	Crosshole Dia	Crosshole Location	Lube Size
HCCF-2.00-S	2.000	1.25	1.125	2.00	1 1/8 - 12	1.00	24	1.6	0.03	1.28	0.13	0.50	3/16 Drive
HCCF-2.25-S	2.250	1.25	1.125	2.00	1 1/8 - 12	1.00	24	1.6	0.03	1.28	0.13	0.50	3/16 Drive
HCCF-2.50-S	2.500	1.50	1.250	2.25	1 1/4 - 12	1.13	30	1.9	0.03	1.53	0.13	0.56	3/16 Drive
HCCF-2.75-S	2.750	1.50	1.250	2.25	1 1/4 - 12	1.13	30	1.9	0.03	1.53	0.13	0.56	3/16 Drive
HCCF-3.00-S	3.000	1.75	1.500	2.50	1 1/2 - 12	1.31	30	2.2	0.03	1.78	0.13	0.63	1/4 Drive
HCCF-3.25-S	3.250	1.75	1.500	2.50	1 1/2 - 12	1.31	30	2.2	0.03	1.78	0.13	0.63	1/4 Drive
HCCF-3.50-S	3.500	2.00	1.750	2.75	1 3/4 - 12	1.38	30	2.5	0.03	2.03	0.13	0.69	1/4 Drive
HCCF-4.00-S	4.000	2.25	2.000	3.50	2 - 12	1.69	30	2.9	0.03	2.28	0.13	0.75	1/4 Drive

HCCF-S Series Cam Follower Assembly

Crowned/Spherical – Heavy Stud Type Concentric – Screwdriver Slot
Full Complement Needle Bearings - Regreasable



ADDITIONAL NOTES

*For lubricated threads, use half the maximum clamping torque value shown.

FC Needle:
Full Complement Needle Bearings – Alloy Steel

Grease Fittings & Jam Nut/Lock Washer sets are available at an additional cost.

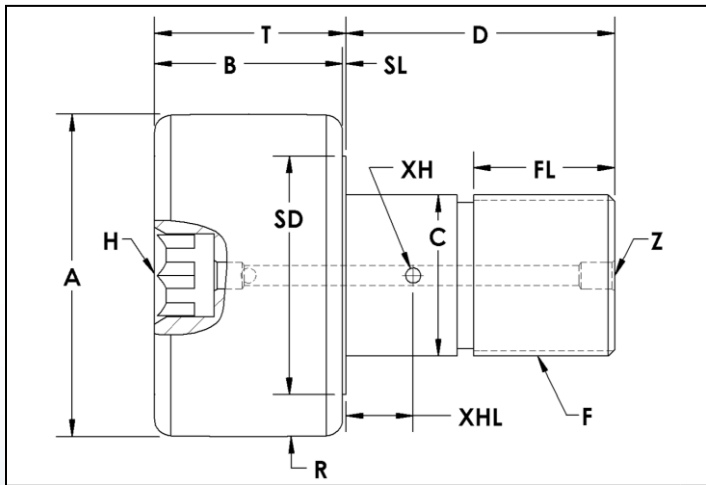
Specifications subject to change without notice.

Stud Type Cam Follower Part Number	Basic Radial Dynamic Load Rating (lbs) C	Basic Radial Static Load Rating (lbs) Co	Stud Capacity (lbs)	Max. Clampin g Torque (in-lbs)*	Seal Type	Bearing Type	Approx. Roller Weight (lbs)
HCCF-2.00-S	8,090	21,140	13,300	1,500	Moly-Filled Nylon Lip	FC Needle	1.51
HCCF-2.25-S	8,090	21,140	13,300	1,500	Moly-Filled Nylon Lip	FC Needle	1.78
HCCF-2.50-S	11,720	32,900	15,270	2,250	Moly-Filled Nylon Lip	FC Needle	2.59
HCCF-2.75-S	11,720	32,900	15,270	2,250	Moly-Filled Nylon Lip	FC Needle	3.01
HCCF-3.00-S	17,620	49,820	22,670	3,450	Moly-Filled Nylon Lip	FC Needle	4.28
HCCF-3.25-S	17,620	49,820	22,670	3,450	Moly-Filled Nylon Lip	FC Needle	4.88
HCCF-3.50-S	23,630	63,250	31,030	5,000	Moly-Filled Nylon Lip	FC Needle	6.68
HCCF-4.00-S	30,270	89,540	41,960	5,000	Moly-Filled Nylon Lip	FC Needle	10.29

HCCF-SH Series Cam Follower Assembly

Crowned/Spherical – Heavy Stud Type Concentric – Hex Socket
Full Complement Needle Bearings - Regreasable

PCF[®]
989.358.6148
www.pcimfg.com



Stud Type Cam Follower Part Number	A	B	C	D	F	FL	H	R	SD	SL	T	XH	XHL	Z
	Roller Dia. +.000 -.001	Roller Width	Stud Dia. +.000 -.001	Stud Length	Thread Size	Thread Length	Hex Size	Crown Radius	Shoulder Dia.	Shoulder Length	Roller Width + Shoulder Length	Crosshole Dia	Crosshole Location	Lube Size
HCCF-2.00-SH	2.000	1.25	1.125	2.00	1 1/8 - 12	1.00	7/16	24	1.6	0.03	1.28	0.13	0.50	3/16 Drive†
HCCF-2.25-SH	2.250	1.25	1.125	2.00	1 1/8 - 12	1.00	7/16	24	1.6	0.03	1.28	0.13	0.50	3/16 Drive†
HCCF-2.50-SH	2.500	1.50	1.250	2.25	1 1/4 - 12	1.13	1/2	30	1.9	0.03	1.53	0.13	0.56	3/16 Drive†
HCCF-2.75-SH	2.750	1.50	1.250	2.25	1 1/4 - 12	1.13	1/2	30	1.9	0.03	1.53	0.13	0.56	3/16 Drive†
HCCF-3.00-SH	3.000	1.75	1.500	2.50	1 1/2 - 12	1.31	3/4	30	2.2	0.03	1.78	0.13	0.63	1/4 Drive
HCCF-3.25-SH	3.250	1.75	1.500	2.50	1 1/2 - 12	1.31	3/4	30	2.2	0.03	1.78	0.13	0.63	1/4 Drive
HCCF-3.50-SH	3.500	2.00	1.750	2.75	1 3/4 - 12	1.38	3/4	30	2.5	0.03	2.03	0.13	0.69	1/4 Drive
HCCF-4.00-SH	4.000	2.25	2.000	3.50	2 - 12	1.69	3/4	30	2.9	0.03	2.28	0.13	0.75	1/4 Drive
HCCF-5.00-SH	5.000	2.75	2.500	5.06	2 1/2 - 12	2.56	7/8	48	3.9	0.06	2.81	0.19	0.88	1/4-18 NPT
HCCF-6.00-SH	6.000	3.25	3.000	6.00	3 - 12	3.00	1	56	4.9	0.06	3.31	0.19	1.00	1/4-18 NPT
HCCF-7.00-SH	7.000	3.75	3.500	7.69	3 1/2 - 4	4.13	1 1/4	60	5.4	0.06	3.81	0.19	1.25	1/4-18 NPT

† Lubrication through threaded end and cross hole only

HCCF-SH Series Cam Follower Assembly

Crowned/Spherical – Heavy Stud Type Concentric – Hex Socket
Full Complement Needle Bearings - Regreasable



ADDITIONAL NOTES

*For lubricated threads, use half the maximum clamping torque value shown.

FC Needle:
Full Complement Needle Bearings – Alloy Steel

Grease Fittings & Jam Nut/Lock Washer sets are available at an additional cost.

Specifications subject to change without notice.

Stud Type Cam Follower Part Number	Basic Radial Dynamic Load Rating (lbs) C	Basic Radial Static Load Rating (lbs) Co	Stud Capacity (lbs)	Max. Clamping Torque (in-lbs)*	Seal Type	Bearing Type	Approx. Roller Weight (lbs)
HCCF-2.00-SH	8,090	21,140	13,300	1,500	Moly-Filled Nylon Lip	FC Needle	1.51
HCCF-2.25-SH	8,090	21,140	13,300	1,500	Moly-Filled Nylon Lip	FC Needle	1.78
HCCF-2.50-SH	11,720	32,900	15,270	2,250	Moly-Filled Nylon Lip	FC Needle	2.59
HCCF-2.75-SH	11,720	32,900	15,270	2,250	Moly-Filled Nylon Lip	FC Needle	3.01
HCCF-3.00-SH	17,620	49,820	22,670	3,450	Moly-Filled Nylon Lip	FC Needle	4.28
HCCF-3.25-SH	17,620	49,820	22,670	3,450	Moly-Filled Nylon Lip	FC Needle	4.88
HCCF-3.50-SH	23,630	63,250	31,030	5,000	Moly-Filled Nylon Lip	FC Needle	6.68
HCCF-4.00-SH	30,270	89,540	41,960	5,000	Moly-Filled Nylon Lip	FC Needle	10.29
HCCF-5.00-SH	53,590	135,900	66,490	5,000	Moly-Filled Nylon Lip	FC Needle	20.64
HCCF-6.00-SH	61,690	160,900	97,540	5,000	Moly-Filled Nylon Lip	FC Needle	35.23
HCCF-7.00-SH	81,860	213,860	134,570	5,000	Moly-Filled Nylon Lip	FC Needle	57.74