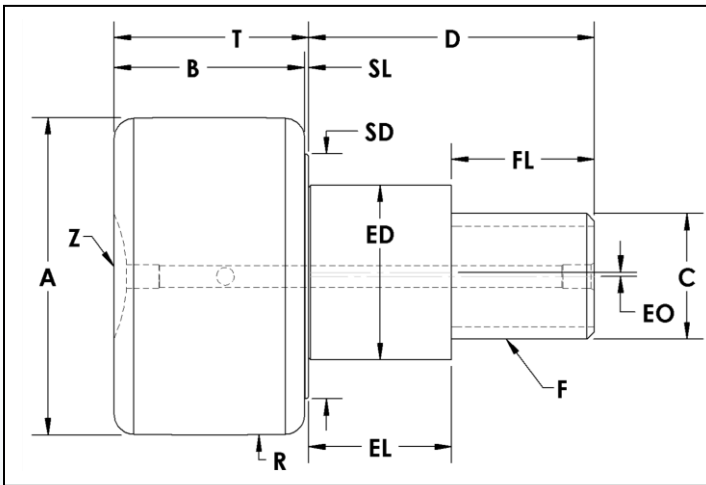


# SCCFE-S Series Cam Follower Assembly

Crowned/Spherical – Stud Type Eccentric – Screwdriver Slot  
Full Complement Needle Bearings - Regreasable

**PCT**<sup>®</sup>  
989.358.6148  
www.pctmfg.com



Stud Type Cam Follower Part Number	A	B	C	D	ED	EL	EO	F	FL	R	SD	SL	T	Z
	Roller Dia. +.000 -.001	Roller Width	Stud Dia.	Stud Length	Ecc Dia +.000 -.002	Ecc Length	Ecc Offset	Thread Size	Thread Length	Crown Radius	Shoulder Dia.	Shoulder Length	Roller Width + Shoulder Length	Lube Size
SCCFE-2.00-S	2.000	1.25	0.875	2.00	1.187	1.00	0.03	7/8 - 14	1.00	24	1.6	0.03	1.28	3/16 Drive
SCCFE-2.25-S	2.250	1.25	0.875	2.00	1.187	1.00	0.03	7/8 - 14	1.00	24	1.6	0.03	1.28	3/16 Drive
SCCFE-2.50-S	2.500	1.50	1.000	2.25	1.375	1.13	0.03	1 - 14	1.13	30	1.9	0.03	1.53	3/16 Drive
SCCFE-2.75-S	2.750	1.50	1.000	2.25	1.375	1.13	0.03	1 - 14	1.13	30	1.9	0.03	1.53	3/16 Drive
SCCFE-3.00-S	3.000	1.75	1.250	2.50	1.750	1.25	0.06	1 1/4 - 12	1.25	30	2.2	0.03	1.78	1/4 Drive
SCCFE-3.25-S	3.250	1.75	1.250	2.50	1.750	1.25	0.06	1 1/4 - 12	1.25	30	2.2	0.03	1.78	1/4 Drive
SCCFE-3.50-S	3.500	2.00	1.375	2.75	1.812	1.38	0.06	1 3/8 - 12	1.38	30	2.5	0.03	2.03	1/4 Drive
SCCFE-4.00-S	4.000	2.25	1.500	3.50	2.000	2.00	0.06	1 1/2 - 12	1.50	30	2.9	0.03	2.28	1/4 Drive

# SCCFE-S Series Cam Follower Assembly

Crowned/Spherical – Stud Type Eccentric – Screwdriver Slot  
Full Complement Needle Bearings - Regreasable

**PCT**<sup>®</sup>  
989.358.6148  
www.pcimfg.com



## ADDITIONAL NOTES

\*For lubricated threads, use half the maximum clamping torque value shown.

FC Needle:  
Full Complement Needle Bearings – Alloy Steel

Grease Fittings & Jam Nut/Lock Washer sets are available at an additional cost.

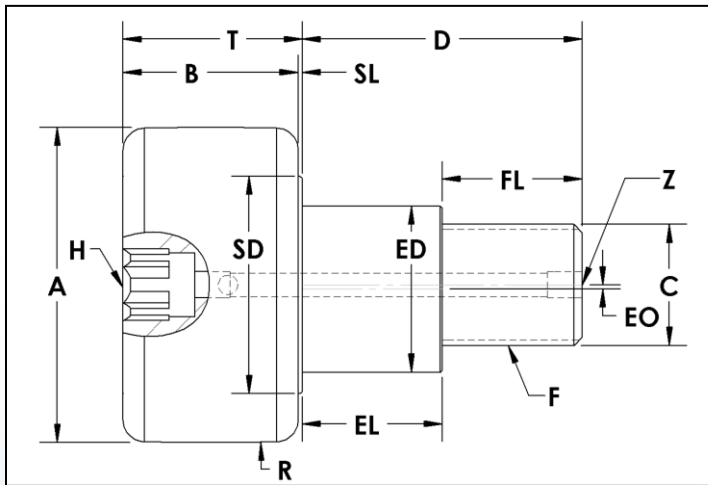
Specifications subject to change without notice.

Stud Type Cam Follower Part Number	Basic Radial Dynamic Load Rating (lbs) C	Basic Radial Static Load Rating (lbs) Co	Stud Capacity (lbs)	Max. Clamping Torque (in-lbs)*	Seal Type	Bearing Type	Approx. Roller Weight (lbs)
SCCFE-2.00-S	8,090	21,140	6,260	1,200	Moly-Filled Nylon Lip	FC Needle	1.43
SCCFE-2.25-S	8,090	21,140	6,260	1,200	Moly-Filled Nylon Lip	FC Needle	1.72
SCCFE-2.50-S	11,720	32,900	7,820	2,250	Moly-Filled Nylon Lip	FC Needle	2.54
SCCFE-2.75-S	11,720	32,900	7,820	2,250	Moly-Filled Nylon Lip	FC Needle	2.96
SCCFE-3.00-S	17,620	49,820	13,120	2,250	Moly-Filled Nylon Lip	FC Needle	4.25
SCCFE-3.25-S	17,620	49,820	13,120	2,250	Moly-Filled Nylon Lip	FC Needle	4.91
SCCFE-3.50-S	23,630	63,250	15,310	5,000	Moly-Filled Nylon Lip	FC Needle	6.39
SCCFE-4.00-S	30,270	89,540	17,700	5,000	Moly-Filled Nylon Lip	FC Needle	9.82

# SCCFE-SH Series Cam Follower Assembly

Crowned/Spherical – Stud Type Eccentric – Hex Socket  
Full Complement Needle Bearings - Regreasable

989.358.6148  
www.pcimfg.com



Stud Type Cam Follower Part Number	A	B	C	D	ED	EL	EO	F	FL	H	R	SD	SL	T	Z
	Roller Dia. +0.000 -0.001	Roller Width	Stud Dia.	Stud Length	Ecc Dia +0.000 -0.002	Ecc Length	Ecc Offset	Thread Size	Thread Length	Hex Size	Crown Radius	Shoulder Dia.	Shoulder Length	Roller Width + Shoulder Length	Lube Size
SCCFE-2.00-SH	2.000	1.25	0.875	2.00	1.187	1.00	0.03	7/8 - 14	1.00	7/16	24	1.6	0.03	1.28	3/16 Drive†
SCCFE-2.00-SH-THT	2.000	1.25	0.875	2.00	1.187	1.00	0.03	7/8 - 14	1.00	7/16	24	1.6	0.03	1.28	1/8-27 NPT†
SCCFE-2.25-SH	2.250	1.25	0.875	2.00	1.187	1.00	0.03	7/8 - 14	1.00	7/16	24	1.6	0.03	1.28	3/16 Drive†
SCCFE-2.25-SH-THT	2.250	1.25	0.875	2.00	1.187	1.00	0.03	7/8 - 14	1.00	7/16	24	1.6	0.03	1.28	1/8-27 NPT†
SCCFE-2.50-SH	2.500	1.50	1.000	2.25	1.375	1.13	0.03	1 - 14	1.13	1/2	30	1.9	0.03	1.53	3/16 Drive†
SCCFE-2.50-SH-THT	2.500	1.50	1.000	2.25	1.375	1.13	0.03	1 - 14	1.13	1/2	30	1.9	0.03	1.53	1/8-27 NPT†
SCCFE-2.75-SH	2.750	1.50	1.000	2.25	1.375	1.13	0.03	1 - 14	1.13	1/2	30	1.9	0.03	1.53	3/16 Drive†
SCCFE-2.75-SH-THT	2.750	1.50	1.000	2.25	1.375	1.13	0.03	1 - 14	1.13	1/2	30	1.9	0.03	1.53	1/8-27 NPT†
SCCFE-3.00-SH	3.000	1.75	1.250	2.50	1.750	1.25	0.06	1 1/4 - 12	1.25	3/4	30	2.2	0.03	1.78	1/4 Drive
SCCFE-3.00-SH-THT	3.000	1.75	1.250	2.50	1.750	1.25	0.06	1 1/4 - 12	1.25	3/4	30	2.2	0.03	1.78	1/8-27 NPT
SCCFE-3.25-SH	3.250	1.75	1.250	2.50	1.750	1.25	0.06	1 1/4 - 12	1.25	3/4	30	2.2	0.03	1.78	1/4 Drive
SCCFE-3.25-SH-THT	3.250	1.75	1.250	2.50	1.750	1.25	0.06	1 1/4 - 12	1.25	3/4	30	2.2	0.03	1.78	1/8-27 NPT
SCCFE-3.50-SH	3.500	2.00	1.375	2.75	1.812	1.38	0.06	1 3/8 - 12	1.38	3/4	30	2.5	0.03	2.03	1/4 Drive
SCCFE-3.50-SH-THT	3.500	2.00	1.375	2.75	1.812	1.38	0.06	1 3/8 - 12	1.38	3/4	30	2.5	0.03	2.03	1/8-27 NPT
SCCFE-4.00-SH	4.000	2.25	1.500	3.50	2.000	2.00	0.06	1 1/2 - 12	1.50	3/4	30	2.9	0.03	2.28	1/4 Drive
SCCFE-4.00-SH-THT	4.000	2.25	1.500	3.50	2.000	2.00	0.06	1 1/2 - 12	1.50	3/4	30	2.9	0.03	2.28	1/8-27 NPT

† Lubrication through threaded end and cross hole only

# SCCFE-SH Series Cam Follower Assembly

Crowned/Spherical – Stud Type Eccentric – Hex Socket

Full Complement Needle Bearings - Regreasable

989.358.6148

www.pcmfg.com



## ADDITIONAL NOTES

\*For lubricated threads, use half the maximum clamping torque value shown.

FC Needle:

Full Complement Needle Bearings – Alloy Steel

Grease Fittings & Jam Nut/Lock Washer sets are available at an additional cost.

Specifications subject to change without notice.

Stud Type Cam Follower Part Number	Basic Radial Dynamic Load Rating (lbs) C	Basic Radial Static Load Rating (lbs) Co	Stud Capacity (lbs)	Max. Clamping Torque (in-lbs)*	Seal Type	Bearing Type	Approx. Roller Weight (lbs)
SCCFE-2.00-SH	8,090	21,140	6,260	1,200	Moly-Filled Nylon Lip	FC Needle	1.43
SCCFE-2.00-SH-THT	8,090	21,140	6,260	1,200	Moly-Filled Nylon Lip	FC Needle	1.43
SCCFE-2.25-SH	8,090	21,140	6,260	1,200	Moly-Filled Nylon Lip	FC Needle	1.72
SCCFE-2.25-SH-THT	8,090	21,140	6,260	1,200	Moly-Filled Nylon Lip	FC Needle	1.72
SCCFE-2.50-SH	11,720	32,900	7,820	2,250	Moly-Filled Nylon Lip	FC Needle	2.54
SCCFE-2.50-SH-THT	11,720	32,900	7,820	2,250	Moly-Filled Nylon Lip	FC Needle	2.54
SCCFE-2.75-SH	11,720	32,900	7,820	2,250	Moly-Filled Nylon Lip	FC Needle	2.96
SCCFE-2.75-SH-THT	11,720	32,900	7,820	2,250	Moly-Filled Nylon Lip	FC Needle	2.96
SCCFE-3.00-SH	17,620	49,820	13,120	2,250	Moly-Filled Nylon Lip	FC Needle	4.25
SCCFE-3.00-SH-THT	17,620	49,820	13,120	2,250	Moly-Filled Nylon Lip	FC Needle	4.25
SCCFE-3.25-SH	17,620	49,820	13,120	2,250	Moly-Filled Nylon Lip	FC Needle	4.91
SCCFE-3.25-SH-THT	17,620	49,820	13,120	2,250	Moly-Filled Nylon Lip	FC Needle	4.91
SCCFE-3.50-SH	23,630	63,250	15,310	5,000	Moly-Filled Nylon Lip	FC Needle	6.39
SCCFE-3.50-SH-THT	23,630	63,250	15,310	5,000	Moly-Filled Nylon Lip	FC Needle	6.39
SCCFE-4.00-SH	23,630	63,250	15,310	5,000	Moly-Filled Nylon Lip	FC Needle	6.39
SCCFE-4.00-SH-THT	30,270	89,540	17,700	5,000	Moly-Filled Nylon Lip	FC Needle	9.82