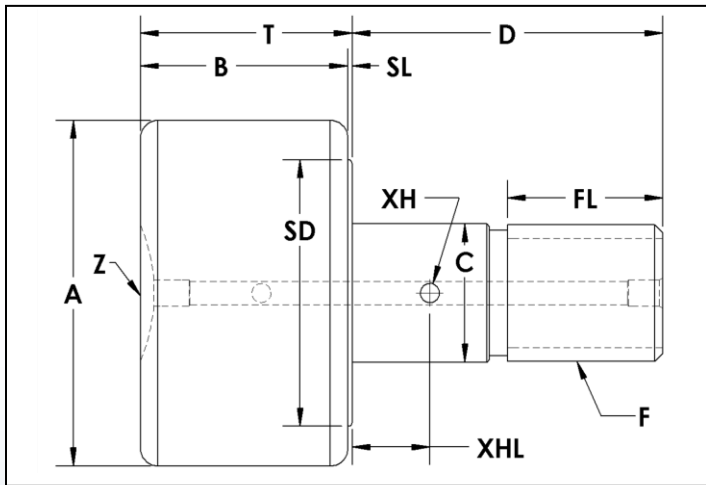


SCF-S Series Cam Follower Assembly

Plain/Cylindrical – Stud Type Concentric – Screwdriver Slot
Full Complement Needle Bearings - Regreasable

PCT[®]
989.358.6148
www.pcimfg.com



Stud Type Cam Follower Part Number	A	B	C	D	F	FL	SD	SL	T	XH	XHL	Z
	Roller Dia. +.000 -.001	Roller Width	Stud Dia. +.000 -.001	Stud Length	Thread Size	Thread Length	Shoulder Dia.	Shoulder Length	Roller Width + Shoulder Length	Crosshole Dia	Crosshole Location	Lube Size
SCF-2.00-S	2.000	1.25	0.875	2.00	7/8 - 14	1.00	1.6	0.03	1.28	0.13	0.50	3/16 Drive
SCF-2.25-S	2.250	1.25	0.875	2.00	7/8 - 14	1.00	1.6	0.03	1.28	0.13	0.50	3/16 Drive
SCF-2.50-S	2.500	1.50	1.000	2.25	1 - 14	1.13	1.9	0.03	1.53	0.13	0.56	3/16 Drive
SCF-2.75-S	2.750	1.50	1.000	2.25	1 - 14	1.13	1.9	0.03	1.53	0.13	0.56	3/16 Drive
SCF-3.00-S	3.000	1.75	1.250	2.50	1 1/4 - 12	1.25	2.2	0.03	1.78	0.13	0.63	1/4 Drive
SCF-3.25-S	3.250	1.75	1.250	2.50	1 1/4 - 12	1.25	2.2	0.03	1.78	0.13	0.63	1/4 Drive
SCF-3.50-S	3.500	2.00	1.375	2.75	1 3/8 - 12	1.38	2.5	0.03	2.03	0.13	0.69	1/4 Drive
SCF-4.00-S	4.000	2.25	1.500	3.50	1 1/2 - 12	1.50	2.9	0.03	2.28	0.13	0.75	1/4 Drive

SCF-S Series Cam Follower Assembly

Plain/Cylindrical – Stud Type Concentric – Screwdriver Slot
Full Complement Needle Bearings - Regreasable



ADDITIONAL NOTES

*For lubricated threads, use half the maximum clamping torque value shown.

FC Needle:
Full Complement Needle Bearings – Alloy Steel

Grease Fittings & Jam Nut/Lock Washer sets are available at an additional cost.

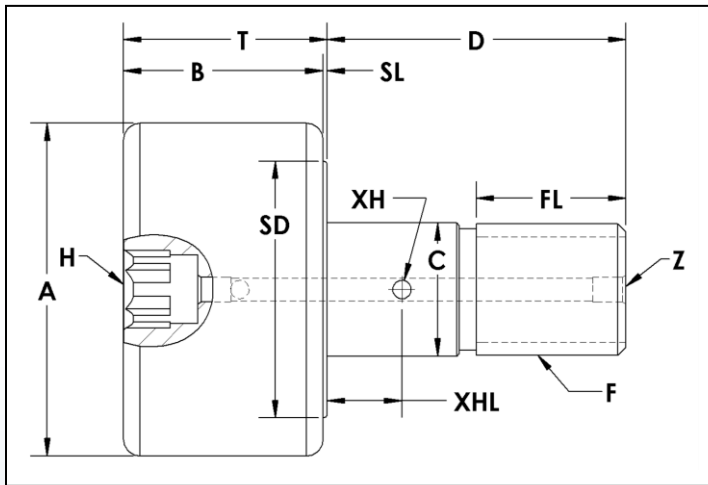
Specifications subject to change without notice.

Stud Type Cam Follower Part Number	Basic Radial Dynamic Load Rating (lbs) C	Basic Radial Static Load Rating (lbs) Co	Stud Capacity (lbs)	Max. Clamping Torque (in-lbs)*	Seal Type	Bearing Type	Approx. Roller Weight (lbs)
SCF-2.00-S	8,090	21,140	6,260	1,200	Moly-Filled Nylon Lip	FC Needle	1.32
SCF-2.25-S	8,090	21,140	6,260	1,200	Moly-Filled Nylon Lip	FC Needle	1.61
SCF-2.50-S	11,720	32,900	7,820	2,250	Moly-Filled Nylon Lip	FC Needle	2.35
SCF-2.75-S	11,720	32,900	7,820	2,250	Moly-Filled Nylon Lip	FC Needle	2.78
SCF-3.00-S	17,620	49,820	13,120	2,250	Moly-Filled Nylon Lip	FC Needle	4.01
SCF-3.25-S	17,620	49,820	13,120	2,250	Moly-Filled Nylon Lip	FC Needle	4.54
SCF-3.50-S	23,630	63,250	15,310	5,000	Moly-Filled Nylon Lip	FC Needle	6.04
SCF-4.00-S	30,270	89,540	17,700	5,000	Moly-Filled Nylon Lip	FC Needle	9.13

SCF-SH Series Cam Follower Assembly

Plain/Cylindrical – Stud Type Concentric – Hex Socket
Full Complement Needle Bearings - Regreasable

PCT[®]
989.358.6148
www.pcmfg.com



Stud Type Cam Follower Part Number	A	B	C	D	F	FL	H	SD	SL	T	XH	XHL	Z
	Roller Dia. +.000 -.001	Roller Width	Stud Dia. +.000 -.001	Stud Length	Thread Size	Thread Length	Hex Size	Shoulder Dia.	Shoulder Length	Roller Width + Shoulder Length	Crosshole Dia	Crosshole Location	Lube Size
SCF-2.00-SH	2.000	1.25	0.875	2.00	7/8 - 14	1.00	7/16	1.6	0.03	1.28	0.13	0.50	3/16 Drive†
SCF-2.00-SH-THT	2.000	1.25	0.875	2.00	7/8 - 14	1.00	7/16	1.6	0.03	1.28	-	-	1/8-27 NPT‡
SCF-2.25-SH	2.250	1.25	0.875	2.00	7/8 - 14	1.00	7/16	1.6	0.03	1.28	0.13	0.50	3/16 Drive†
SCF-2.25-SH-THT	2.250	1.25	0.875	2.00	7/8 - 14	1.00	7/16	1.6	0.03	1.28	-	-	1/8-27 NPT‡
SCF-2.50-SH	2.500	1.50	1.000	2.25	1 - 14	1.13	1/2	1.9	0.03	1.53	0.13	0.56	3/16 Drive†
SCF-2.50-SH-THT	2.500	1.50	1.000	2.25	1 - 14	1.13	1/2	1.9	0.03	1.53	-	-	1/8-27 NPT‡
SCF-2.75-SH	2.750	1.50	1.000	2.25	1 - 14	1.13	1/2	1.9	0.03	1.53	0.13	0.56	3/16 Drive†
SCF-2.75-SH-THT	2.750	1.50	1.000	2.25	1 - 14	1.13	1/2	1.9	0.03	1.53	-	-	1/8-27 NPT‡
SCF-3.00-SH	3.000	1.75	1.250	2.50	1 1/4 - 12	1.25	3/4	2.2	0.03	1.78	0.13	0.63	1/4 Drive
SCF-3.00-SH-THT	3.000	1.75	1.250	2.50	1 1/4 - 12	1.25	3/4	2.2	0.03	1.78	-	-	1/8-27 NPT
SCF-3.25-SH	3.250	1.75	1.250	2.50	1 1/4 - 12	1.25	3/4	2.2	0.03	1.78	0.13	0.63	1/4 Drive
SCF-3.25-SH-THT	3.250	1.75	1.250	2.50	1 1/4 - 12	1.25	3/4	2.2	0.03	1.78	-	-	1/8-27 NPT
SCF-3.50-SH	3.500	2.00	1.375	2.75	1 3/8 - 12	1.38	3/4	2.5	0.03	2.03	0.13	0.69	1/4 Drive
SCF-3.50-SH-THT	3.500	2.00	1.375	2.75	1 3/8 - 12	1.38	3/4	2.5	0.03	2.03	-	-	1/8-27 NPT
SCF-4.00-SH	4.000	2.25	1.500	3.50	1 1/2 - 12	1.50	3/4	2.9	0.03	2.28	0.13	0.75	1/4 Drive
SCF-4.00-SH-THT	4.000	2.25	1.500	3.50	1 1/2 - 12	1.50	3/4	2.9	0.03	2.28	-	-	1/8-27 NPT
SCF-5.00-SH	5.000	2.75	2.000	5.06	2 - 12	2.56	7/8	3.9	0.06	2.81	0.19	0.88	1/4-18 NPT
SCF-6.00-SH	6.000	3.25	2.500	6.00	2 1/2 - 12	3.00	1	4.9	0.06	3.31	0.19	1.00	1/4-18 NPT
SCF-7.00-SH	7.000	3.75	3.000	7.69	3 - 12	4.13	1 1/4	5.4	0.06	3.81	0.19	1.25	1/4-18 NPT
SCF-8.00-SH	8.000	4.25	3.250	8.50	3 1/4 - 4	4.25	1 1/4	6.4	0.13	5.13*	-	-	1/4-18 NPT
SCF-9.00-SH	9.000	4.75	3.750	9.50	3 1/2 - 4	4.75	1 1/4	7.4	0.13	5.63*	-	-	1/4-18 NPT
SCF-10.00-SH	10.000	5.25	4.250	10.00	3 1/2 - 4	4.75	1 1/4	7.4	0.13	6.13*	-	-	1/4-18 NPT

† Lubrication through threaded end and cross hole only

‡ Lubrication through threaded end only

* Stud extends .750" beyond the roller body on end opposite the threads

SCF-SH Series Cam Follower Assembly

Plain/Cylindrical – Stud Type Concentric – Hex Socket
Full Complement Needle Bearings - Regreasable



ADDITIONAL NOTES

*For lubricated threads, use half the maximum clamping torque value shown.

FC Needle:
Full Complement Needle Bearings – Alloy Steel

Grease Fittings & Jam Nut/Lock Washer sets are available at an additional cost.

Specifications subject to change without notice.

Stud Type Cam Follower Part Number	Basic Radial Dynamic Load Rating (lbs) C	Basic Radial Static Load Rating (lbs) Co	Stud Capacity (lbs)	Max. Clamping Torque (in-lbs)*	Seal Type	Bearing Type	Approx. Roller Weight (lbs)
SCF-2.00-SH	8,090	21,140	6,260	1,200	Moly-Filled Nylon Lip	FC Needle	1.32
SCF-2.00-SH-THT	8,090	21,140	6,260	1,200	Moly-Filled Nylon Lip	FC Needle	1.32
SCF-2.25-SH	8,090	21,140	6,260	1,200	Moly-Filled Nylon Lip	FC Needle	1.61
SCF-2.25-SH-THT	8,090	21,140	6,260	1,200	Moly-Filled Nylon Lip	FC Needle	1.61
SCF-2.50-SH	11,720	32,900	7,820	2,250	Moly-Filled Nylon Lip	FC Needle	2.35
SCF-2.50-SH-THT	11,720	32,900	7,820	2,250	Moly-Filled Nylon Lip	FC Needle	2.35
SCF-2.75-SH	11,720	32,900	7,820	2,250	Moly-Filled Nylon Lip	FC Needle	2.78
SCF-2.75-SH-THT	11,720	32,900	7,820	2,250	Moly-Filled Nylon Lip	FC Needle	2.78
SCF-3.00-SH	17,620	49,820	13,120	2,250	Moly-Filled Nylon Lip	FC Needle	4.01
SCF-3.00-SH-THT	17,620	49,820	13,120	2,250	Moly-Filled Nylon Lip	FC Needle	4.01
SCF-3.25-SH	17,620	49,820	13,120	2,250	Moly-Filled Nylon Lip	FC Needle	4.54
SCF-3.25-SH-THT	17,620	49,820	13,120	2,250	Moly-Filled Nylon Lip	FC Needle	4.54
SCF-3.50-SH	23,630	63,250	15,310	5,000	Moly-Filled Nylon Lip	FC Needle	6.04
SCF-3.50-SH-THT	23,630	63,250	15,310	5,000	Moly-Filled Nylon Lip	FC Needle	6.04
SCF-4.00-SH	30,270	89,540	17,700	5,000	Moly-Filled Nylon Lip	FC Needle	9.13
SCF-4.00-SH-THT	30,270	89,540	17,700	5,000	Moly-Filled Nylon Lip	FC Needle	9.13
SCF-5.00-SH	53,590	135,900	34,040	5,000	Moly-Filled Nylon Lip	FC Needle	18.23
SCF-6.00-SH	61,690	160,900	56,450	5,000	Moly-Filled Nylon Lip	FC Needle	31.76
SCF-7.00-SH	81,860	213,860	84,740	5,000	Moly-Filled Nylon Lip	FC Needle	53.38
SCF-8.00-SH	111,400	288,200	80,020	5,000	Moly-Filled Nylon Lip	FC Needle	82.22
SCF-9.00-SH	151,400	366,860	112,010	5,000	Moly-Filled Nylon Lip	FC Needle	115.01
SCF-10.00-SH	160,480	431,130	149,750	5,000	Moly-Filled Nylon Lip	FC Needle	151.24