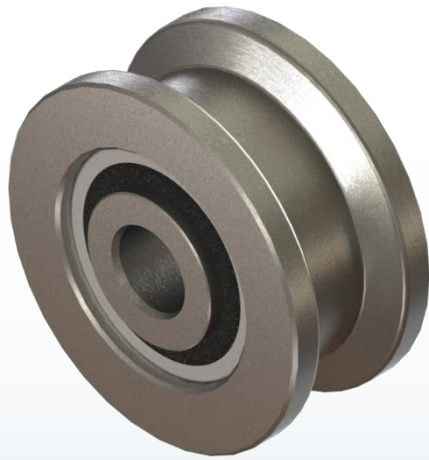


FFTRY Series Track Roller Assembly

Double Flanged – Yoke Type
Ball & Tapered Roller Bearings



ADDITIONAL NOTES

DGGB: Deep Groove Ball Bearings – Alloy Steel
TRB: Tapered Roller Bearings – Alloy Steel

PCI Heavy Duty Yoke Shafts are available at an additional cost. See YSH page for details.

Specifications subject to change without notice.

| Yoke Type Track Roller Part Number | Basic Radial Dynamic Load Rating (lbs) C | Basic Radial Static Load Rating (lbs) Co | Thrust Dynamic Load Rating (lbs) | Thrust Static Load Rating (lbs) | Seal Type | Bearing Type | Approx. Roller Weight (lbs) |
|--|--|--|--|---|-----------------|-----------------|--------------------------------------|
| FFTRY-1.50 | 1,683 | 1,147 | 764 | 287 | Rubber Lip | DGGB | 0.45 |
| FFTRY-1.75 | 1,683 | 1,147 | 764 | 287 | Rubber Lip | DGGB | 0.71 |
| FFTRY-2.00 | 3,624 | 2,248 | 1,591 | 562 | Rubber Lip | DGGB | 1.32 |
| FFTRY-2.25 | 3,624 | 2,248 | 1,591 | 562 | Rubber Lip | DGGB | 1.67 |
| FFTRY-2.50 | 5,390 | 3,507 | 2,407 | 877 | Rubber Lip | DGGB | 2.19 |
| FFTRY-2.50E | 10,880 | 7,630 | 4,010 | 4,570 | Rubber Dual Lip | TRB | 2.23 |
| FFTRY-2.75 | 5,390 | 3,507 | 2,407 | 877 | Rubber Lip | DGGB | 2.69 |
| FFTRY-2.75E | 10,880 | 7,630 | 4,010 | 4,570 | Rubber Dual Lip | TRB | 2.73 |
| FFTRY-3.00A | 6,118 | 4,586 | 2,884 | 1,147 | Rubber Lip | DGGB | 3.86 |
| FFTRY-3.00 | 14,300 | 20,000 | 5,790 | 12,000 | Rubber Dual Lip | TRB | 4.06 |
| FFTRY-3.25A | 6,118 | 4,586 | 2,884 | 1,147 | Rubber Lip | DGGB | 4.44 |
| FFTRY-3.25 | 14,300 | 20,000 | 5,790 | 12,000 | Rubber Dual Lip | TRB | 4.69 |
| FFTRY-3.50A | 6,483 | 5,216 | 3,145 | 1,304 | Rubber Lip | DGGB | 5.43 |
| FFTRY-3.50 | 17,600 | 27,200 | 5,750 | 13,100 | Rubber Dual Lip | TRB | 5.79 |
| FFTRY-4.00A | 6,483 | 5,216 | 3,145 | 1,304 | Rubber Lip | DGGB | 8.16 |
| FFTRY-4.00 | 17,600 | 27,200 | 5,750 | 13,100 | Rubber Dual Lip | TRB | 8.55 |
| FFTRY-5.00 | 35,870 | 58,400 | 13,310 | 32,100 | Rubber Dual Lip | TRB | 14.80 |
| FFTRY-6.00 | 35,830 | 56,200 | 14,150 | 32,900 | Rubber Dual Lip | TRB | 22.94 |
| FFTRY-7.00 | 42,400 | 79,800 | 17,400 | 48,400 | Rubber Lip | TRB | 33.76 |
| FFTRY-8.00 | 83,700 | 159,800 | 39,000 | 110,000 | Rubber Lip | TRB | 48.43 |
| FFTRY-9.00 | 134,600 | 250,000 | 53,600 | 147,000 | Rubber Lip | TRB | 66.73 |
| FFTRY-10.00 | 137,300 | 276,000 | 62,000 | 194,000 | Rubber Lip | TRB | 88.62 |
| FFTRY-12.00 | 137,300 | 276,000 | 62,000 | 194,000 | Rubber Lip | TRB | 140.38 |
| FFTRY-14.00 | 137,300 | 276,000 | 62,000 | 194,000 | Rubber Lip | TRB | 200.85 |
| FFTRY-16.00 | 137,300 | 276,000 | 62,000 | 194,000 | Rubber Lip | TRB | 270.50 |
| FFTRY-18.00 | 137,300 | 276,000 | 62,000 | 194,000 | Rubber Lip | TRB | 349.33 |
| FFTRY-20.00 | 137,300 | 276,000 | 62,000 | 194,000 | Rubber Lip | TRB | 437.33 |

FFTRY-R Series Track Roller Assembly

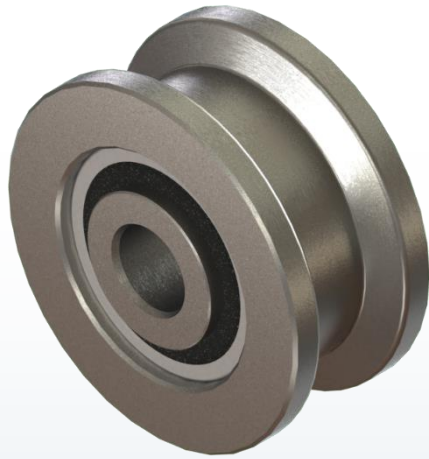
Double Flanged – Yoke Type

Ball & Tapered Roller Bearings - Regreasable



989.358.6148

www.pcimfg.com



ADDITIONAL NOTES

DGBB: Deep Groove Ball Bearings – Alloy Steel

TRB: Tapered Roller Bearings – Alloy Steel

PCI Heavy Duty Yoke Shafts are available at an additional cost. See YSH page for details.

Specifications subject to change without notice.

| Yoke Type Track Roller Part Number | Basic Radial Dynamic Load Rating (lbs) C | Basic Radial Static Load Rating (lbs) Co | Thrust Dynamic Load Rating (lbs) | Thrust Static Load Rating (lbs) | Seal Type | Bearing Type | Approx. Roller Weight (lbs) |
|--|--|--|--|---|-----------------|-----------------|--------------------------------------|
| FFTRY-1.50-R | 1,683 | 1,147 | 764 | 287 | Rubber Lip | DGBB | 0.45 |
| FFTRY-1.75-R | 1,683 | 1,147 | 764 | 287 | Rubber Lip | DGBB | 0.71 |
| FFTRY-2.00-R | 3,624 | 2,248 | 1,591 | 562 | Rubber Lip | DGBB | 1.32 |
| FFTRY-2.25-R | 3,624 | 2,248 | 1,591 | 562 | Rubber Lip | DGBB | 1.67 |
| FFTRY-2.50-R | 5,390 | 3,507 | 2,407 | 877 | Rubber Lip | DGBB | 2.19 |
| FFTRY-2.50E-R | 10,880 | 7,630 | 4,010 | 4,570 | Rubber Dual Lip | TRB | 2.23 |
| FFTRY-2.75-R | 5,390 | 3,507 | 2,407 | 877 | Rubber Lip | DGBB | 2.69 |
| FFTRY-2.75E-R | 10,880 | 7,630 | 4,010 | 4,570 | Rubber Dual Lip | TRB | 2.73 |
| FFTRY-3.00A-R | 6,118 | 4,586 | 2,884 | 1,147 | Rubber Lip | DGBB | 3.86 |
| FFTRY-3.00-R | 14,300 | 20,000 | 5,790 | 12,000 | Rubber Dual Lip | TRB | 4.06 |
| FFTRY-3.25A-R | 6,118 | 4,586 | 2,884 | 1,147 | Rubber Lip | DGBB | 4.44 |
| FFTRY-3.25-R | 14,300 | 20,000 | 5,790 | 12,000 | Rubber Dual Lip | TRB | 4.69 |
| FFTRY-3.50A-R | 6,483 | 5,216 | 3,145 | 1,304 | Rubber Lip | DGBB | 5.43 |
| FFTRY-3.50-R | 17,600 | 27,200 | 5,750 | 13,100 | Rubber Dual Lip | TRB | 5.79 |
| FFTRY-4.00A-R | 6,483 | 5,216 | 3,145 | 1,304 | Rubber Lip | DGBB | 8.16 |
| FFTRY-4.00-R | 17,600 | 27,200 | 5,750 | 13,100 | Rubber Dual Lip | TRB | 8.55 |
| FFTRY-5.00-R | 35,870 | 58,400 | 13,310 | 32,100 | Rubber Dual Lip | TRB | 14.80 |
| FFTRY-6.00-R | 35,830 | 56,200 | 14,150 | 32,900 | Rubber Dual Lip | TRB | 22.94 |
| FFTRY-7.00-R | 42,400 | 79,800 | 17,400 | 48,400 | Rubber Lip | TRB | 33.76 |
| FFTRY-8.00-R | 83,700 | 159,800 | 39,000 | 110,000 | Rubber Lip | TRB | 48.43 |
| FFTRY-9.00-R | 134,600 | 250,000 | 53,600 | 147,000 | Rubber Lip | TRB | 66.73 |
| FFTRY-10.00-R | 137,300 | 276,000 | 62,000 | 194,000 | Rubber Lip | TRB | 88.62 |
| FFTRY-12.00-R | 137,300 | 276,000 | 62,000 | 194,000 | Rubber Lip | TRB | 140.38 |
| FFTRY-14.00-R | 137,300 | 276,000 | 62,000 | 194,000 | Rubber Lip | TRB | 200.85 |
| FFTRY-16.00-R | 137,300 | 276,000 | 62,000 | 194,000 | Rubber Lip | TRB | 270.50 |
| FFTRY-18.00-R | 137,300 | 276,000 | 62,000 | 194,000 | Rubber Lip | TRB | 349.33 |
| FFTRY-20.00-R | 137,300 | 276,000 | 62,000 | 194,000 | Rubber Lip | TRB | 437.33 |