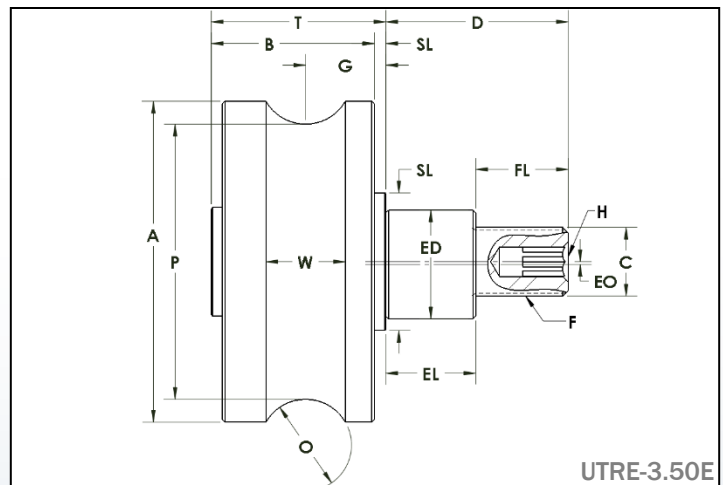
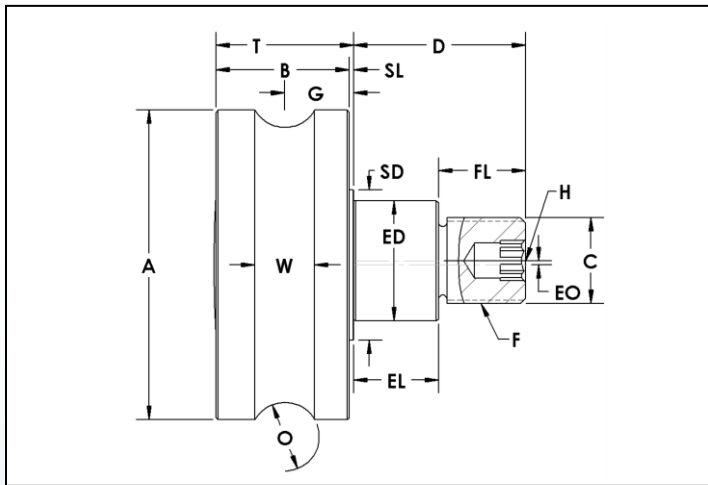


UTRE Series Track Roller Assembly

U-Grooved – Stud Type Eccentric
Ball & Tapered Roller Bearings

PCF[®]
989.358.6148
www.pcfmfg.com



UTRE-3.50E

Stud Type Track Roller Part Number	A	B	C	D	ED	EL	EO	F	FL	G	H	O	P	SD	SL	T	W
	Roller Dia.	Roller Width	Stud Dia. +.000 -.001	Stud Length	Ecc Dia +.000 -.002	Ecc Length	Ecc Offset	Thread Size	Thread Length	Groove Center	Hex Size	Rail Size	Point Dia. +.000 -.001	Shoulder Dia.	Shoulder Length	Roller Width + Shoulder Length	Tread Width
UTRE-1.50	1.50	0.75	0.437	1.00	0.625	0.48	0.03	7/16 - 20	0.52	0.41	3/16	1/2	1.250	0.7	0.03	0.78	0.43
UTRE-1.75	1.75	0.75	0.437	1.00	0.625	0.48	0.03	7/16 - 20	0.52	0.41	3/16	1/2	1.500	0.7	0.03	0.78	0.43
UTRE-2.00	2.00	0.81	0.500	1.25	0.687	0.61	0.03	1/2 - 20	0.65	0.44	3/16	5/8	1.750	0.8	0.03	0.84	0.50
UTRE-2.50	2.50	1.25	0.750	1.75	1.000	0.86	0.03	3/4 - 16	0.90	0.69	5/16	3/4	2.000	1.3	0.06	1.31	0.71
UTRE-3.50	3.50	1.63	0.875	2.00	1.187	0.98	0.03	7/8 - 14	1.02	0.88	5/16	1	3.000	1.5	0.06	1.69	0.87
UTRE-3.50E*	3.50	1.65	0.750	2.00	1.187	0.98	0.03	3/4 - 16	1.02	0.88	5/16	1	3.000	1.5	0.13	1.90+	0.87
UTRE-4.50A	4.50	1.94	1.250	2.50	1.750	1.23	0.06	1 1/4 - 12	1.27	1.00	1/2	1	4.000	2.2	0.06	2.00	0.87
UTRE-4.50	4.50	1.94	1.250	2.50	1.750	1.23	0.06	1 1/4 - 12	1.27	1.00	1/2	1	4.000	2.2	0.06	2.20	0.87
UTRE-5.50	5.50	1.94	1.250	2.75	1.812	1.36	0.06	1 1/4 - 12	1.40	1.00	1/2	1 1/4	5.000	2.2	0.06	2.00	1.00
UTRE-6.00	5.94	2.94	2.000	4.50	2.625	2.13	0.06	2 - 12	2.38	1.50	5/8	1 1/2	5.000	3.3	0.06	3.00	1.39
UTRE-7.00	6.94	2.94	2.500	5.50	3.125	2.88	0.06	2 1/2 - 12	2.63	1.50	5/8	2	6.000	3.6	0.06	3.00	1.69

*UTRE-3.50E is designed with stud extending 7/64" from end of roller. Design does not incorporate a dust cover.

UTRE Series Track Roller Assembly

U-Grooved – Stud Type Eccentric
Ball & Tapered Roller Bearings

PCT[®]
989.358.6148
www.pcimfg.com



ADDITIONAL NOTES

*For lubricated threads, use half the maximum clamping torque value shown.

DGGB: Deep Groove Ball Bearings – Alloy Steel
TRB: Tapered Roller Bearings – Alloy Steel

Jam Nut & Lock Washer sets are available at an additional cost.

Specifications subject to change without notice.

Stud Type Track Roller Part Number	Basic Radial Dynamic Load Rating (lbs) C	Basic Radial Static Load Rating (lbs) Co	Thrust Dynamic Load Rating (lbs)	Thrust Static Load Rating (lbs)	Stud Capacity (lbs)	Retaining Ring Capacity (lbs)	Max. Clamping Torque (in-lbs)*	Seal Type	Bearing Type	Approx. Roller Weight (lbs)
UTRE-1.50	956	480	331	60	530	470	250	Rubber Lip	DGGB	0.36
UTRE-1.75	956	480	331	60	530	470	250	Rubber Lip	DGGB	0.57
UTRE-2.00	1,231	640	430	80	930	470	180	Rubber Lip	DGGB	0.67
UTRE-2.50	2,651	1,394	1,101	348	1,480	550	650	Rubber Lip	DGGB	1.60
UTRE-3.50	3,624	2,136	1,563	534	4,660	900	3,450	Rubber Lip	DGGB	4.10
UTRE-3.50E*	11,957	7,200	3,540	3,150	3,390	-	1,500	Rubber Dual Lip	TRB	4.10
UTRE-4.50A	7,393	5,036	3,358	1,259	13,980	1,950	1,500	Rubber Lip	DGGB	8.72
UTRE-4.50	14,300	20,000	5,790	12,000	12,710	-	1,500	Rubber Dual Lip	TRB	8.76
UTRE-5.50	14,300	20,000	5,790	12,000	13,980	-	1,500	Rubber Dual Lip	TRB	12.94
UTRE-6.00	35,870	58,400	13,310	32,100	38,190	-	1,500	Rubber Dual Lip	TRB	23.99
UTRE-7.00	35,830	56,200	14,150	32,900	74,580	-	1,500	Rubber Dual Lip	TRB	35.48

UTRE-R Series Track Roller Assembly

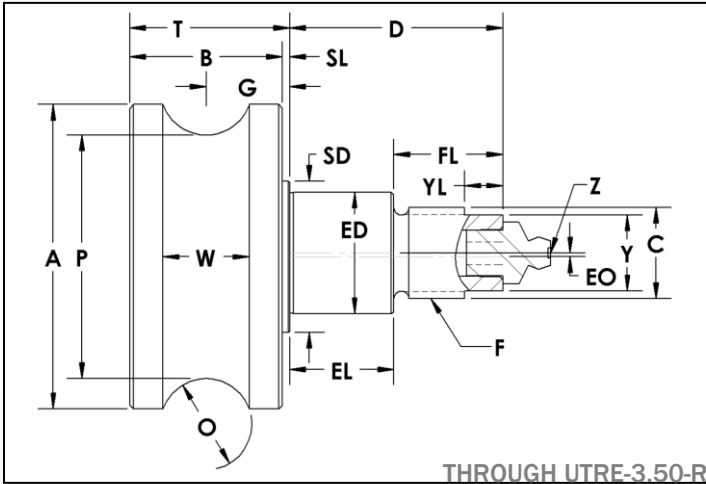
U-Grooved – Stud Type Eccentric

Ball & Tapered Roller Bearings - Regreasable

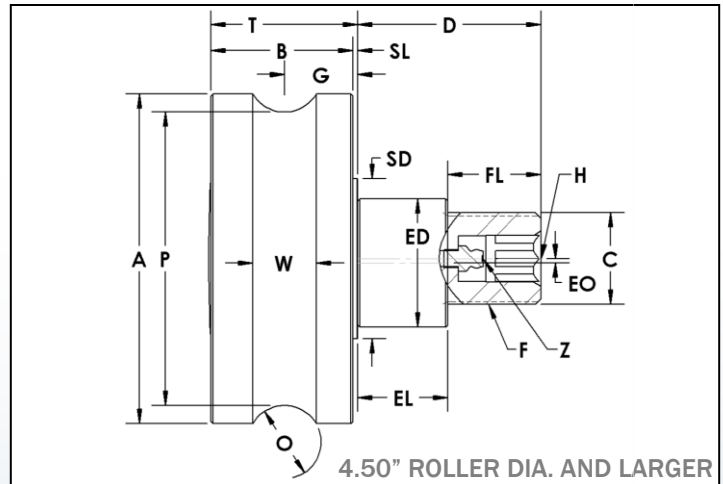


989.358.6148

www.pcimfg.com



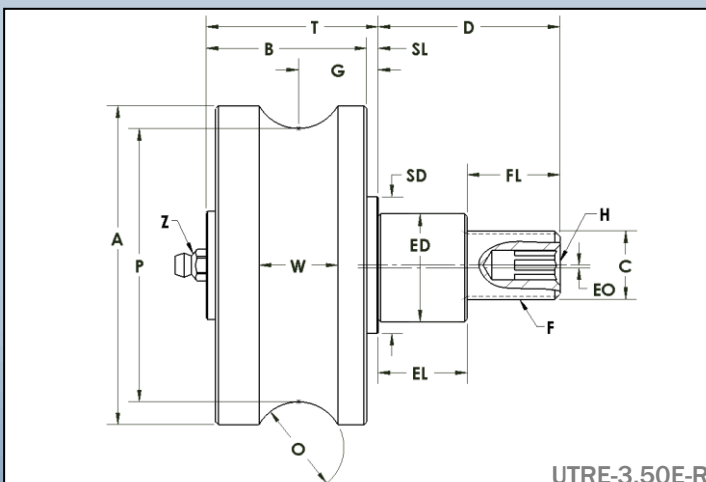
THROUGH UTRE-3.50-R



4.50" ROLLER DIA. AND LARGER

Stud Type Track Roller Part Number	A	B	C	D	ED	EL	EO	F	FL	G	H	O	P	SD	SL	T	W	Y	YL	Z
	Roller Dia.	Roller Width	Stud Dia. +.000 -.001	Stud Length	Ecc Dia +.000 -.002	Ecc Length	Ecc Offset	Thread Size	Thread Length	Groove Center	Hex Size	Rail Size	Point Dia. +.000 -.001	Shld Dia.	Shld Length	Roller Width + Shoulder Length	Tread Width	Wrench Flat	Wrench Flat Length	Lube Size
UTRE-1.50-R	1.50	0.75	0.437	1.00	0.625	0.48	0.03	7/16 - 20	0.52	0.41	-	1/2	1.250	0.7	0.03	0.78	0.43	0.312	0.250	1/8 Drive
UTRE-1.75-R	1.75	0.75	0.437	1.00	0.625	0.48	0.03	7/16 - 20	0.52	0.41	-	1/2	1.500	0.7	0.03	0.78	0.43	0.312	0.250	1/8 Drive
UTRE-2.00-R	2.00	0.81	0.500	1.25	0.687	0.61	0.03	1/2 - 20	0.65	0.44	-	5/8	1.750	0.8	0.03	0.84	0.50	0.375	0.250	1/8 Drive
UTRE-2.50-R	2.50	1.25	0.750	1.75	1.000	0.86	0.03	3/4 - 16	0.90	0.69	-	3/4	2.000	1.3	0.06	1.31	0.71	0.625	0.375	1/8-27 NPT
UTRE-3.50-R	3.50	1.63	0.875	2.00	1.187	0.98	0.03	7/8 - 14	1.02	0.88	-	1	3.000	1.5	0.06	1.69	0.87	0.625	0.375	1/8-27 NPT
UTRE-3.50E-R*	3.50	1.65	0.750	2.00	1.187	0.98	0.03	3/4 - 16	1.02	0.88	5/16	1	3.000	1.5	0.13	1.90+	0.87	-	-	1/4-28 UNF
UTRE-4.50A-R	4.50	1.94	1.250	2.50	1.750	1.23	0.06	1 1/4 - 12	1.27	1.00	5/8	1	4.000	2.2	0.06	2.00	0.87	-	-	1/4-28 UNF
UTRE-4.50-R	4.50	1.94	1.250	2.50	1.750	1.23	0.06	1 1/4 - 12	1.27	1.00	5/8	1	4.000	2.2	0.06	2.20	0.87	-	-	1/4-28 UNF
UTRE-5.50-R	5.50	1.94	1.250	2.75	1.812	1.36	0.06	1 1/4 - 12	1.40	1.00	5/8	1 1/4	5.000	2.2	0.06	2.00	1.00	-	-	1/4-28 UNF
UTRE-6.00-R	5.94	2.94	2.000	4.50	2.625	2.13	0.06	2 - 12	2.38	1.50	5/8	1 1/2	5.000	3.3	0.06	3.00	1.39	-	-	1/4-28 UNF
UTRE-7.00-R	6.94	2.94	2.500	5.50	3.125	2.88	0.06	2 1/2 - 12	2.63	1.50	5/8	2	6.000	3.6	0.06	3.00	1.69	-	-	1/4-28 UNF

*UTRE-3.50E-R is regreasable through the stud extending 7/64" from end of roller. Design does not incorporate a dust cover.



UTRE-3.50E-R

UTRE-R Series Track Roller Assembly

U-Grooved – Stud Type Eccentric

Ball & Tapered Roller Bearings - Regreasable



989.358.6148

www.pcimfg.com



ADDITIONAL NOTES

*For lubricated threads, use half the maximum clamping torque value shown.

DGGB: Deep Groove Ball Bearings – Alloy Steel
TRB: Tapered Roller Bearings – Alloy Steel

Jam Nut & Lock Washer sets are available at an additional cost.

Specifications subject to change without notice.

Stud Type Track Roller Part Number	Basic Radial Dynamic Load Rating (lbs) C	Basic Radial Static Load Rating (lbs) Co	Thrust Dynamic Load Rating (lbs)	Thrust Static Load Rating (lbs)	Stud Capacity (lbs)	Retaining Ring Capacity (lbs)	Max. Clamping Torque (in-lbs)*	Seal Type	Bearing Type	Approx. Roller Weight (lbs)
UTRE-1.50-R	956	480	331	60	530	470	250	Rubber Lip	DGGB	0.36
UTRE-1.75-R	956	480	331	60	530	470	250	Rubber Lip	DGGB	0.57
UTRE-2.00-R	1,231	640	430	80	930	470	180	Rubber Lip	DGGB	0.67
UTRE-2.50-R	2,651	1,394	1,101	348	1,480	550	650	Rubber Lip	DGGB	1.60
UTRE-3.50-R	3,624	2,136	1,563	534	4,660	900	3,450	Rubber Lip	DGGB	4.10
UTRE-3.50E-R	11,957	7,200	3,540	3,150	3,390	-	1,500	Rubber Dual Lip	TRB	4.10
UTRE-4.50A-R	7,393	5,036	3,358	1,259	13,980	1,950	1,500	Rubber Lip	DGGB	8.72
UTRE-4.50-R	14,300	20,000	5,790	12,000	12,710	-	1,500	Rubber Dual Lip	TRB	8.76
UTRE-5.50-R	14,300	20,000	5,790	12,000	13,980	-	1,500	Rubber Dual Lip	TRB	12.94
UTRE-6.00-R	35,870	58,400	13,310	32,100	38,190	-	1,500	Rubber Dual Lip	TRB	23.99
UTRE-7.00-R	35,830	56,200	14,150	32,900	74,580	-	1,500	Rubber Dual Lip	TRB	35.48