

# UTRY Series Track Roller Assembly

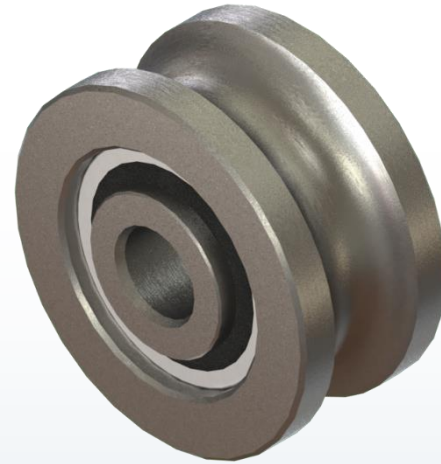
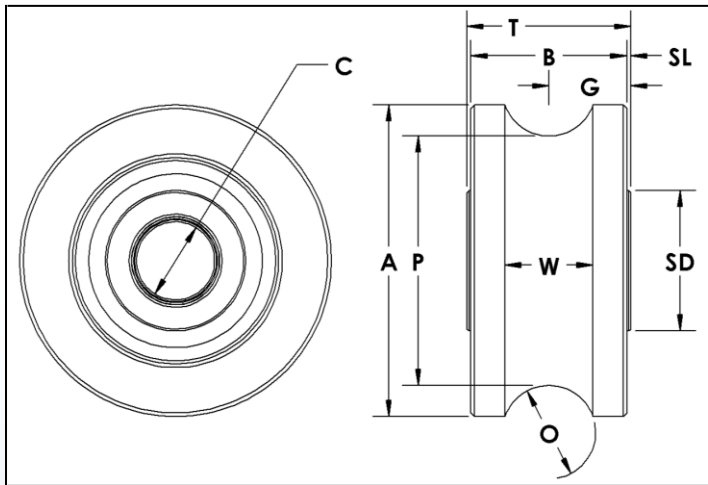
U-Grooved – Yoke Type

Ball & Tapered Roller Bearings



989.358.6148

www.pcimfg.com



Yoke Type Track Roller Part Number	A Roller Dia.	B Roller Width	C Bore Dia. +0.0007 -.0000	G Groove Center	O Rail Size	P Point Dia. +0.000 -.001	SD Shoulder Dia.	SL Shoulder Length	T Inner Race Width +0.005 -.010	W Tread Width
UTRY-1.75	1.75	0.88	0.4380	0.47	1/2	1.500	0.9	0.03	0.937	0.44
UTRY-2.00	2.00	1.00	0.5005	0.53	5/8	1.750	0.9	0.03	1.063	0.50
UTRY-2.50	2.50	1.25	0.6255	0.66	3/4	2.000	1.1	0.03	1.313	0.71
UTRY-3.50A	3.50	1.75	1.0005	0.91	1	3.000	1.8	0.03	1.813	0.87
UTRY-3.50	3.50	1.75	1.0005	0.91	1	3.000	1.8	0.03	1.813	0.87
UTRY-4.50A	4.50	2.25	1.2505	1.16	1	4.000	2.0	0.03	2.313	0.87
UTRY-4.50	4.50	2.25	1.2505	1.16	1	4.000	2.0	0.03	2.313	0.87
UTRY-5.50	5.50	2.75	1.7508	1.44	1 1/4	5.000	3.2	0.06	2.875	1.00
UTRY-6.00	5.94	2.75	1.7508	1.44	1 1/2	5.000	3.2	0.06	2.875	1.39
UTRY-7.00	6.94	3.25	2.2508	1.69	2	6.000	3.5	0.06	3.375	1.69

Optional PCI Yoke Shaft	Optional PCI Eccentric Yoke Shaft
YSH-.437	YSHE-.437
YSH-.500	YSHE-.500
YSH-.625	YSHE-.625
YSH-1.000	YSHE-1.000
YSH-1.000	YSHE-1.000
YSH-1.250	YSHE-1.250
YSH-1.250	YSHE-1.250
YSH-1.750	YSHE-1.750
YSH-1.750	YSHE-1.750
YSH-2.250	YSHE-2.250

# UTRY Series Track Roller Assembly

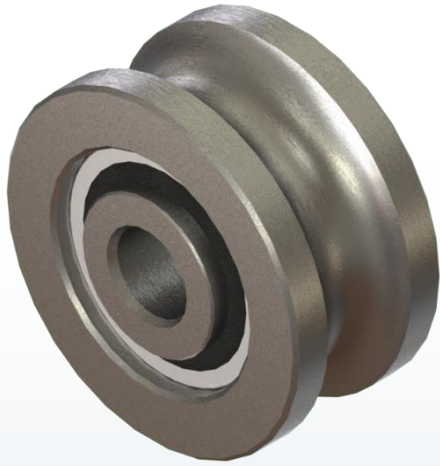
U-Grooved – Yoke Type

Ball & Tapered Roller Bearings



989.358.6148

www.pcimfg.com



## ADDITIONAL NOTES

DGBB: Deep Groove Ball Bearings – Alloy Steel

TRB: Tapered Roller Bearings – Alloy Steel

PCI Heavy Duty Yoke Shafts are available at an additional cost. See YSH page for details.

Specifications subject to change without notice.

Yoke Type Track Roller Part Number	Basic Radial Dynamic Load Rating (lbs) C	Basic Radial Static Load Rating (lbs) Co	Thrust Dynamic Load Rating (lbs)	Thrust Static Load Rating (lbs)	Seal Type	Bearing Type	Approx. Roller Weight (lbs)
UTRY-1.75	1,683	1,147	764	287	Rubber Lip	DGBB	0.42
UTRY-2.00	1,683	1,147	764	287	Rubber Lip	DGBB	0.65
UTRY-2.50	3,624	2,248	1,591	562	Rubber Lip	DGBB	1.19
UTRY-3.50A	6,118	4,586	2,884	1,147	Rubber Lip	DGBB	3.30
UTRY-3.50	14,300	20,000	5,790	12,000	Rubber Dual Lip	TRB	3.50
UTRY-4.50A	6,483	5,216	3,145	1,304	Rubber Lip	DGBB	7.93
UTRY-4.50	17,600	27,200	5,750	13,100	Rubber Dual Lip	TRB	8.34
UTRY-5.50	35,870	58,400	13,310	32,100	Rubber Dual Lip	TRB	15.00
UTRY-6.00	35,870	58,400	13,310	32,100	Rubber Dual Lip	TRB	16.59
UTRY-7.00	35,830	56,200	14,150	32,900	Rubber Dual Lip	TRB	25.42

# UTRY-R Series Track Roller Assembly

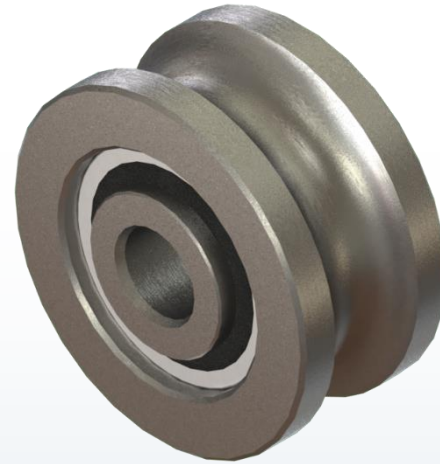
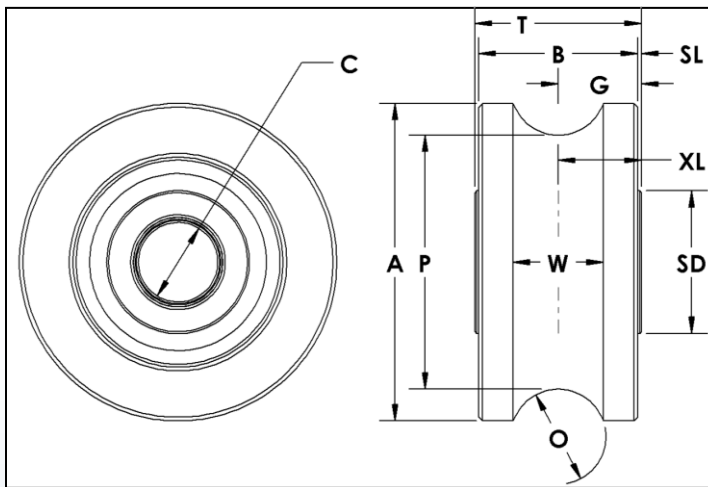
U-Grooved – Yoke Type

Ball & Tapered Roller Bearings - Regreasable



989.358.6148

www.pcimfg.com



Yoke Type Track Roller Part Number	A	B	C	G	O	P	SD	SL	T	W	XL	Optional PCI Yoke Shaft	Optional PCI Eccentric Yoke Shaft
	Roller Dia.	Roller Width	Bore Dia. +.0007 -.0000	Groove Center	Rail Size	Point Dia. +.000 -.001	Shoulder Dia.	Shoulder Length	Inner Race Width +.005 -.010	Tread Width	Grease Groove Location		
UTRY-1.75-R	1.75	0.88	0.4380	0.47	1/2	1.500	0.9	0.03	0.937	0.44	-	YSH-.437-R	YSHE-.437-R
UTRY-2.00-R	2.00	1.00	0.5005	0.53	5/8	1.750	0.9	0.03	1.063	0.50	0.53	YSH-.500-R	YSHE-.500-R
UTRY-2.50-R	2.50	1.25	0.6255	0.66	3/4	2.000	1.1	0.03	1.313	0.71	0.66	YSH-.625-R	YSHE-.625-R
UTRY-3.50A-R	3.50	1.75	1.0005	0.91	1	3.000	1.8	0.03	1.813	0.87	0.91	YSH-1.000-R	YSHE-1.000-R
UTRY-3.50-R	3.50	1.75	1.0005	0.91	1	3.000	1.8	0.03	1.813	0.87	0.91	YSH-1.000-R	YSHE-1.000-R
UTRY-4.50A-R	4.50	2.25	1.2505	1.16	1	4.000	2.0	0.03	2.313	0.87	1.16	YSH-1.250-R	YSHE-1.250-R
UTRY-4.50-R	4.50	2.25	1.2505	1.16	1	4.000	2.0	0.03	2.313	0.87	1.16	YSH-1.250-R	YSHE-1.250-R
UTRY-5.50-R	5.50	2.75	1.7508	1.44	1 1/4	5.000	3.2	0.06	2.875	1.00	1.44	YSH-1.750-R	YSHE-1.750-R
UTRY-6.00-R	5.94	2.75	1.7508	1.44	1 1/2	5.000	3.2	0.06	2.875	1.39	1.44	YSH-1.750-R	YSHE-1.750-R
UTRY-7.00-R	6.94	3.25	2.2508	1.69	2	6.000	3.5	0.06	3.375	1.69	1.69	YSH-2.250-R	YSHE-2.250-R

# UTRY-R Series Track Roller Assembly

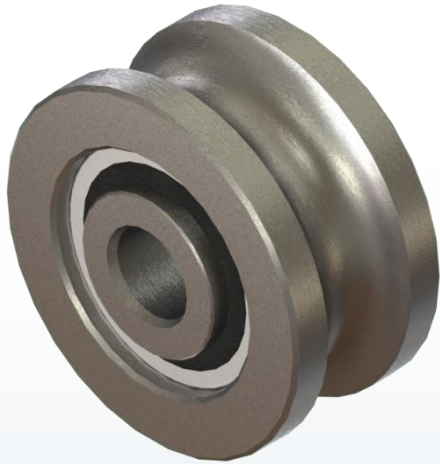
U-Grooved – Yoke Type

Ball & Tapered Roller Bearings - Regreasable



989.358.6148

www.pcimfg.com



## ADDITIONAL NOTES

DGGB: Deep Groove Ball Bearings – Alloy Steel

TRB: Tapered Roller Bearings – Alloy Steel

PCI Heavy Duty Yoke Shafts are available at an additional cost. See YSH page for details.

Specifications subject to change without notice.

Yoke Type Track Roller Part Number	Basic Radial Dynamic Load Rating (lbs) C	Basic Radial Static Load Rating (lbs) Co	Thrust Dynamic Load Rating (lbs)	Thrust Static Load Rating (lbs)	Seal Type	Bearing Type	Approx. Roller Weight (lbs)
UTRY-1.75-R	1,683	1,147	764	287	Rubber Lip	DGGB	0.42
UTRY-2.00-R	1,683	1,147	764	287	Rubber Lip	DGGB	0.65
UTRY-2.50-R	3,624	2,248	1,591	562	Rubber Lip	DGGB	1.19
UTRY-3.50A-R	6,118	4,586	2,884	1,147	Rubber Lip	DGGB	3.30
UTRY-3.50-R	14,300	20,000	5,790	12,000	Rubber Dual Lip	TRB	3.50
UTRY-4.50A-R	6,483	5,216	3,145	1,304	Rubber Lip	DGGB	7.93
UTRY-4.50-R	17,600	27,200	5,750	13,100	Rubber Dual Lip	TRB	8.34
UTRY-5.50-R	35,870	58,400	13,310	32,100	Rubber Dual Lip	TRB	15.00
UTRY-6.00-R	35,870	58,400	13,310	32,100	Rubber Dual Lip	TRB	16.59
UTRY-7.00-R	35,830	56,200	14,150	32,900	Rubber Dual Lip	TRB	25.42