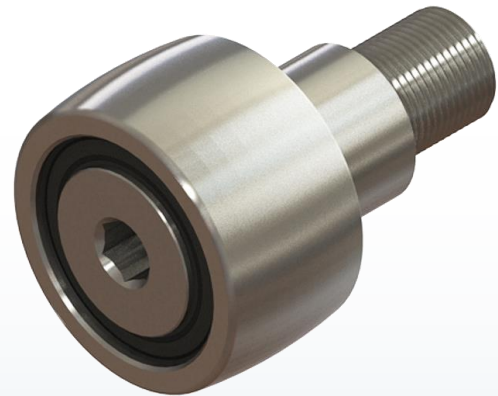
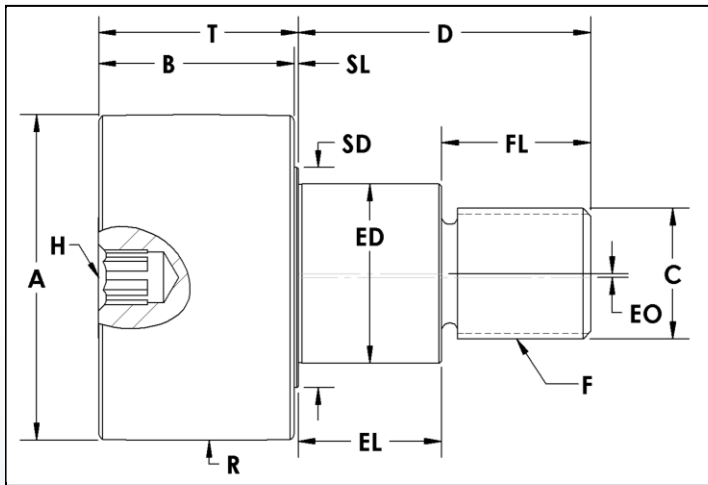


CXRE Series Roller Assembly

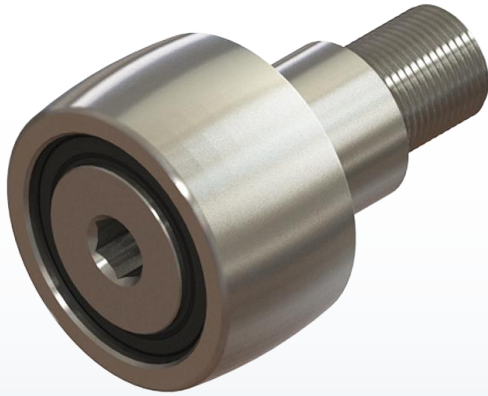
Crowned/Spherical – Stud Type Eccentric
Ball & Tapered Roller Bearings



Stud Type XR Roller Part Number	A Roller Dia. +0.000 -0.001	B Roller Width	C Stud Dia.	D Stud Length	ED Ecc Dia +0.000 -0.002	EL Ecc Length	EO Ecc Offset	F Thread Size	FL Thread Length	H Hex Size	R Crown Radius	SD Shoulder Dia.	SL Shoulder Length	T Roller Width + Shoulder Length
CXRE-1.50	1.500	0.88	0.625	1.50	0.875	0.75	0.03	5/8 - 18	0.75	5/16	20	1.0	0.03	0.91
CXRE-1.75	1.750	1.00	0.750	1.75	1.000	0.88	0.03	3/4 - 16	0.90	5/16	20	1.2	0.03	1.03
CXRE-2.00	2.000	1.25	0.875	2.00	1.187	1.00	0.03	7/8 - 14	1.00	5/16	24	1.5	0.03	1.28
CXRE-2.25	2.250	1.25	0.875	2.00	1.187	1.00	0.03	7/8 - 14	1.00	5/16	24	1.5	0.03	1.28
CXRE-2.50	2.500	1.50	1.000	2.25	1.375	1.12	0.03	1 - 14	1.13	3/8	30	1.9	0.03	1.53
CXRE-2.50E	2.500	1.50	1.000	2.25	1.375	1.12	0.03	1 - 14	1.13	3/8	30	1.9	0.03	1.53
CXRE-2.75	2.750	1.50	1.000	2.25	1.375	1.12	0.03	1 - 14	1.13	3/8	30	1.9	0.03	1.53
CXRE-2.75E	2.750	1.50	1.000	2.25	1.375	1.12	0.03	1 - 14	1.13	3/8	30	1.9	0.03	1.53
CXRE-3.00A	3.000	1.75	1.250	2.50	1.750	1.23	0.06	1 1/4 - 12	1.27	1/2	30	2.2	0.03	1.78
CXRE-3.00	3.000	1.75	1.250	2.50	1.750	1.23	0.06	1 1/4 - 12	1.27	1/2	30	2.2	0.03	1.78
CXRE-3.25A	3.250	1.75	1.250	2.50	1.750	1.23	0.06	1 1/4 - 12	1.27	1/2	30	2.2	0.03	1.78
CXRE-3.25	3.250	1.75	1.250	2.50	1.750	1.23	0.06	1 1/4 - 12	1.27	1/2	30	2.2	0.03	1.78
CXRE-3.50A	3.500	2.00	1.375	2.75	1.812	1.37	0.06	1 3/8 - 12	1.39	1/2	30	2.5	0.03	2.03
CXRE-3.50	3.500	2.00	1.375	2.75	1.812	1.37	0.06	1 3/8 - 12	1.39	1/2	30	2.5	0.03	2.03
CXRE-4.00A	4.000	2.25	1.500	3.50	2.000	2.00	0.06	1 1/2 - 12	1.50	1/2	30	2.5	0.03	2.28
CXRE-4.00	4.000	2.25	1.500	3.50	2.000	2.00	0.06	1 1/2 - 12	1.50	1/2	30	2.5	0.03	2.28

CXRE Series Roller Assembly

Crowned/Spherical – Stud Type Eccentric
Ball & Tapered Roller Bearings



ADDITIONAL NOTES

*For lubricated threads, use half the maximum clamping torque value shown.

DGGB: Deep Groove Ball Bearings – Alloy Steel
TRB: Tapered Roller Bearings – Alloy Steel

Jam Nut & Lock Washer sets are available at an additional cost.

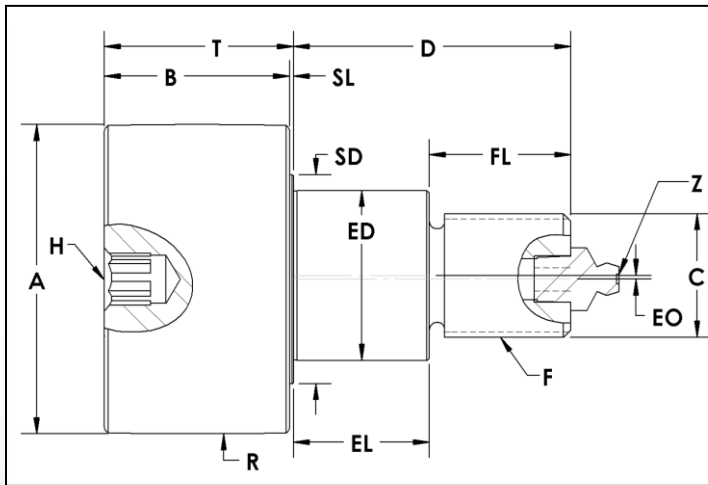
Specifications subject to change without notice.

Stud Type XR Roller Part Number	Basic Radial Dynamic Load Rating (lbs) C	Basic Radial Static Load Rating (lbs) Co	Thrust Dynamic Load Rating (lbs)	Thrust Static Load Rating (lbs)	Stud Capacity (lbs)	Retaining Ring Capacity (lbs)	Max. Clamping Torque (in-lbs)*	Seal Type	Bearing Type	Approx. Roller Weight (lbs)
CXRE-1.50	1,683	1,147	764	287	5,050	910	350	Rubber Lip	DGGB	0.51
CXRE-1.75	1,683	1,147	764	287	4,430	910	650	Rubber Lip	DGGB	0.88
CXRE-2.00	3,624	2,248	1,591	562	5,710	1,340	650	Rubber Lip	DGGB	1.46
CXRE-2.25	3,624	2,248	1,591	562	5,710	1,340	650	Rubber Lip	DGGB	1.78
CXRE-2.50	5,390	3,507	2,407	877	9,270	1,340	1,500	Rubber Lip	DGGB	2.30
CXRE-2.50E	10,880	7,630	4,010	4,570	9,360	-	1,200	Rubber Dual Lip	TRB	2.44
CXRE-2.75	5,390	3,507	2,407	877	9,270	1,340	1,500	Rubber Lip	DGGB	2.94
CXRE-2.75E	10,880	7,630	4,010	4,570	9,360	-	1,200	Rubber Dual Lip	TRB	2.94
CXRE-3.00A	6,118	4,586	2,884	1,147	21,750	1,950	2,250	Rubber Lip	DGGB	4.00
CXRE-3.00	14,300	20,000	5,790	12,000	15,710	-	2,250	Rubber Dual Lip	TRB	4.26
CXRE-3.25A	6,118	4,586	2,884	1,147	21,750	1,950	2,250	Rubber Lip	DGGB	4.35
CXRE-3.25	14,300	20,000	5,790	12,000	15,710	-	2,250	Rubber Dual Lip	TRB	4.45
CXRE-3.50A	6,483	5,216	3,145	1,304	28,350	3,000	4,200	Rubber Lip	DGGB	5.97
CXRE-3.50	17,600	27,200	5,750	13,100	18,340	-	5,000	Rubber Dual Lip	TRB	6.41
CXRE-4.00A	6,483	5,216	3,145	1,304	25,160	3,000	5,000	Rubber Lip	DGGB	9.06
CXRE-4.00	17,600	27,200	5,750	13,100	21,200	-	5,000	Rubber Dual Lip	TRB	9.75

CXRE-R Series Roller Assembly

Crowned/Spherical – Stud Type Eccentric
Ball & Tapered Roller Bearings - Regreasable

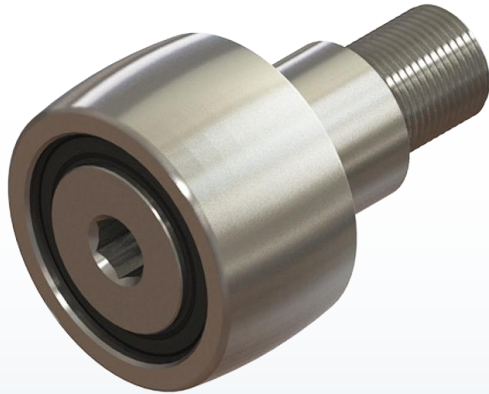
PCF[®]
989.358.6148
www.pcimfg.com



Stud Type XR Roller Part Number	A	B	C	D	ED	EL	EO	F	FL	H	R	SD	SL	T	Z
	Roller Dia. +0.000 -0.001	Roller Width	Stud Dia.	Stud Length	Ecc Dia +0.000 -0.002	Ecc Length	Ecc Offset	Thread Size	Thread Length	Hex Size	Crown Radius	Shoulder Dia.	Shoulder Length	Roller Width + Shoulder Length	Lube Size
CXRE-1.75-R	1.750	1.00	0.750	1.75	1.000	0.88	0.03	3/4 - 16	0.90	5/16	20	1.2	0.03	1.03	1/8-27 NPT
CXRE-2.00-R	2.000	1.25	0.875	2.00	1.187	1.00	0.03	7/8 - 14	1.00	5/16	24	1.5	0.03	1.28	1/8-27 NPT
CXRE-2.25-R	2.250	1.25	0.875	2.00	1.187	1.00	0.03	7/8 - 14	1.00	5/16	24	1.5	0.03	1.28	1/8-27 NPT
CXRE-2.50-R	2.500	1.50	1.000	2.25	1.375	1.12	0.03	1 - 14	1.13	3/8	30	1.9	0.03	1.53	1/8-27 NPT
CXRE-2.50E-R	2.500	1.50	1.000	2.25	1.375	1.12	0.03	1 - 14	1.13	3/8	30	1.9	0.03	1.53	1/8-27 NPT
CXRE-2.75-R	2.750	1.50	1.000	2.25	1.375	1.12	0.03	1 - 14	1.13	3/8	30	1.9	0.03	1.53	1/8-27 NPT
CXRE-2.75E-R	2.750	1.50	1.000	2.25	1.375	1.12	0.03	1 - 14	1.13	3/8	30	1.9	0.03	1.53	1/8-27 NPT
CXRE-3.00A-R	3.000	1.75	1.250	2.50	1.750	1.23	0.06	1 1/4 - 12	1.27	1/2	30	2.2	0.03	1.78	1/8-27 NPT
CXRE-3.00-R	3.000	1.75	1.250	2.50	1.750	1.23	0.06	1 1/4 - 12	1.27	1/2	30	2.2	0.03	1.78	1/8-27 NPT
CXRE-3.25A-R	3.250	1.75	1.250	2.50	1.750	1.23	0.06	1 1/4 - 12	1.27	1/2	30	2.2	0.03	1.78	1/8-27 NPT
CXRE-3.25-R	3.250	1.75	1.250	2.50	1.750	1.23	0.06	1 1/4 - 12	1.27	1/2	30	2.2	0.03	1.78	1/8-27 NPT
CXRE-3.50A-R	3.500	2.00	1.375	2.75	1.812	1.37	0.06	1 3/8 - 12	1.39	1/2	30	2.5	0.03	2.03	1/8-27 NPT
CXRE-3.50-R	3.500	2.00	1.375	2.75	1.812	1.37	0.06	1 3/8 - 12	1.39	1/2	30	2.5	0.03	2.03	1/8-27 NPT
CXRE-4.00A-R	4.000	2.25	1.500	3.50	2.000	2.00	0.06	1 1/2 - 12	1.50	1/2	30	2.5	0.03	2.28	1/8-27 NPT
CXRE-4.00-R	4.000	2.25	1.500	3.50	2.000	2.00	0.06	1 1/2 - 12	1.50	1/2	30	2.5	0.03	2.28	1/8-27 NPT

CXRE-R Series Roller Assembly

Crowned/Spherical – Stud Type Eccentric
Ball & Tapered Roller Bearings - Regreasable



ADDITIONAL NOTES

*For lubricated threads, use half the maximum clamping torque value shown.

DGBB: Deep Groove Ball Bearings – Alloy Steel
TRB: Tapered Roller Bearings – Alloy Steel

Jam Nut & Lock Washer sets are available at an additional cost.

Specifications subject to change without notice.

Stud Type XR Roller Part Number	Basic Radial Dynamic Load Rating (lbs) C	Basic Radial Static Load Rating (lbs) Co	Thrust Dynamic Load Rating (lbs)	Thrust Static Load Rating (lbs)	Stud Capacity (lbs)	Retaining Ring Capacity (lbs)	Max. Clamping Torque (in-lbs)*	Seal Type	Bearing Type	Approx. Roller Weight (lbs)
CXRE-1.75-R	1,683	1,147	764	287	4,430	910	650	Rubber Lip	DGBB	0.88
CXRE-2.00-R	3,624	2,248	1,591	562	5,710	1,340	650	Rubber Lip	DGBB	1.46
CXRE-2.25-R	3,624	2,248	1,591	562	5,710	1,340	650	Rubber Lip	DGBB	1.78
CXRE-2.50-R	5,390	3,507	2,407	877	9,270	1,340	1,500	Rubber Lip	DGBB	2.30
CXRE-2.50E-R	10,880	7,630	4,010	4,570	9,360	-	1,200	Rubber Dual Lip	TRB	2.44
CXRE-2.75-R	5,390	3,507	2,407	877	9,270	1,340	1,500	Rubber Lip	DGBB	2.94
CXRE-2.75E-R	10,880	7,630	4,010	4,570	9,360	-	1,200	Rubber Dual Lip	TRB	2.94
CXRE-3.00A-R	6,118	4,586	2,884	1,147	21,750	1,950	2,250	Rubber Lip	DGBB	4.00
CXRE-3.00-R	14,300	20,000	5,790	12,000	15,710	-	2,250	Rubber Dual Lip	TRB	4.20
CXRE-3.25A-R	6,118	4,586	2,884	1,147	21,750	1,950	2,250	Rubber Lip	DGBB	4.35
CXRE-3.25-R	14,300	20,000	5,790	12,000	15,710	-	2,250	Rubber Dual Lip	TRB	4.45
CXRE-3.50A-R	6,483	5,216	3,145	1,304	28,350	3,000	4,200	Rubber Lip	DGBB	5.94
CXRE-3.50-R	17,600	27,200	5,750	13,100	18,340	-	5,000	Rubber Dual Lip	TRB	6.38
CXRE-4.00A-R	6,483	5,216	3,145	1,304	25,160	3,000	5,000	Rubber Lip	DGBB	9.02
CXRE-4.00-R	17,600	27,200	5,750	13,100	21,200	-	5,000	Rubber Dual Lip	TRB	9.71