

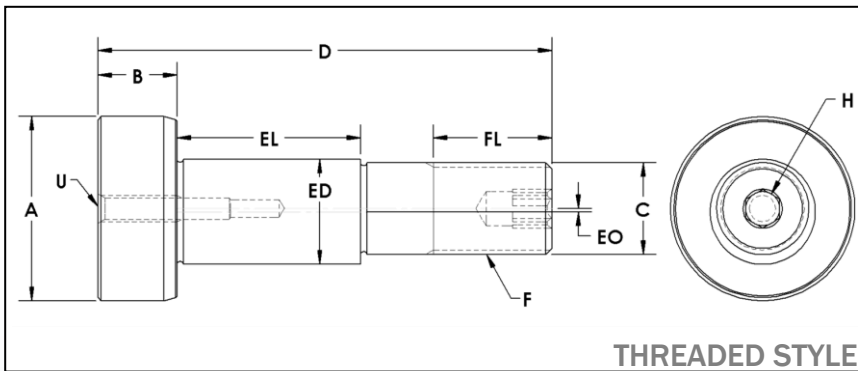
YSHE Series Heavy Duty Yoke Shaft

Threaded Style – Eccentric Shaft



989.358.6148

www.pcimfg.com



Yoke Shaft Part Number	A	B	C	D	ED	EL	EO	F	FL	H	U	Approx. Weight (lbs)
	Head Dia. +0.005 -0.000	Head Width	Shaft Dia. +0.000 -0.005	Shaft Length	Ecc Dia +0.00 -0.02	Ecc Length	Ecc Offset	Thread Size	Thread Length	Hex Size	Internal Thread	
YSHE-.437	0.7500	0.38	0.3130	2.06	0.437	0.84	0.03	5/16 - 18	0.63	5/32	1/4 - 28 UNF	0.11
YSHE-.500	0.8750	0.44	0.3750	2.38	0.500	0.97	0.03	3/8 - 24	0.75	1/4	1/4 - 28 UNF	0.17
YSHE-.625	1.3750	0.50	0.5000	3.13	0.625	1.19	0.03	1/2 - 20	0.88	5/16	1/4 - 28 UNF	0.30
YSHE-.750	1.5620	0.63	0.6250	3.75	0.750	1.50	0.03	5/8 - 18	1.00	5/16	1/4 - 28 UNF	0.66
YSHE-1.000	1.7500	0.75	0.8750	4.31	1.000	1.75	0.03	7/8 - 14	1.13	1/2	1/4 - 28 UNF	1.50
YSHE-1.125	2.0000	0.88	1.0000	4.88	1.125	2.00	0.06	1 - 14	1.19	1/2	3/8 - 16 UNC	2.14
YSHE-1.250	2.2500	0.88	1.0000	5.25	1.250	2.25	0.06	1 - 14	1.31	1/2	3/8 - 16 UNC	2.36
YSHE-1.750	3.5000	1.25	1.5000	7.00	1.750	2.81	0.06	1 1/2 - 12	1.88	1/2	1/2 - 13 UNC	7.87
YSHE-2.250	3.5000	1.25	2.0000	7.75	2.250	3.31	0.06	2 - 12	2.13	5/8	1/2 - 13 UNC	12.32
YSHE-2.750	4.2500	1.38	2.5000	9.00	2.750	3.81	0.06	2 1/2 - 12	2.63	5/8	1/2 - 13 UNC	21.88

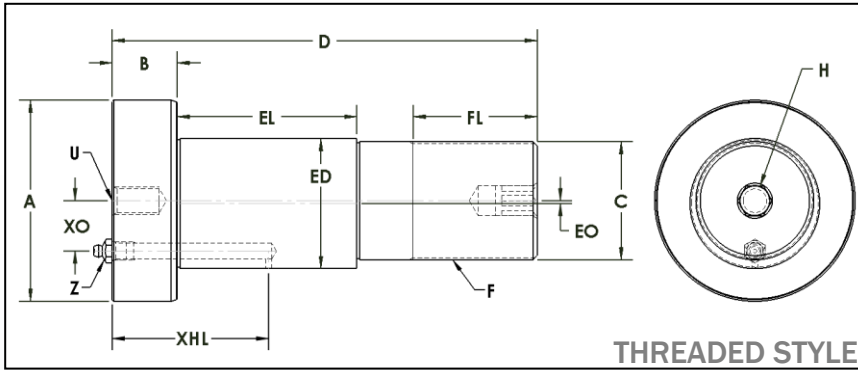
ADDITIONAL NOTES

Jam Nut & Lock Washer sets and lubrication fittings are included.

Specifications subject to change without notice.

YSHE-R Series Heavy Duty Yoke Shaft

Threaded Style – Eccentric Shaft
Regreasable



Yoke Shaft Part Number	A	B	C	D	ED	EL	EO	F	FL	H	U	XHL	XO	Z	Approx. Weight (lbs)
	Head Dia. +.0005 - .0000	Head Width	Shaft Dia. +.0000 - .0005	Shaft Length	Ecc Dia +.000 - .002	Ecc Length	Ecc Offset	Thread Size	Thread Length	Hex Size	Internal Thread	Crosshole Location	Grease Fitting Offset	Lube Size	
YSHE-.437-R	0.7500	0.38	0.3130	2.06	0.437	0.84	0.03	5/16 - 18	0.63	5/32	1/4 - 28 UNF	0.84	-	1/4 - 28 UNF	0.12
YSHE-.500-R	0.8750	0.44	0.3750	2.38	0.500	0.97	0.03	3/8 - 24	0.75	1/4	1/4 - 28 UNF	0.97	-	1/4 - 28 UNF	0.18
YSHE-.625-R	1.3750	0.50	0.5000	3.13	0.625	1.19	0.03	1/2 - 20	0.88	5/16	1/4 - 28 UNF	1.10	-	1/4 - 28 UNF	0.38
YSHE-.750-R	1.5620	0.63	0.6250	3.75	0.750	1.50	0.03	5/8 - 18	1.00	5/16	1/4 - 28 UNF	1.40	-	1/4 - 28 UNF	0.79
YSHE-1.000-R	1.7500	0.75	0.8750	4.31	1.000	1.75	0.03	7/8 - 14	1.13	1/2	1/4 - 28 UNF	1.66	-	1/4 - 28 UNF	1.51
YSHE-1.125-R	2.0000	0.88	1.0000	4.88	1.125	2.00	0.06	1 - 14	1.19	1/2	3/8 - 16 UNC	1.91	0.42	1/4 - 28 UNF	2.14
YSHE-1.250-R	2.2500	0.88	1.0000	5.25	1.250	2.25	0.06	1 - 14	1.31	1/2	3/8 - 16 UNC	2.03	0.48	1/4 - 28 UNF	2.58
YSHE-1.750-R	3.5000	1.25	1.5000	7.00	1.750	2.81	0.06	1 1/2 - 12	1.88	1/2	1/2 - 13 UNC	2.69	0.69	1/8 - 27 NPT	7.86
YSHE-2.250-R	3.5000	1.25	2.0000	7.75	2.250	3.31	0.06	2 - 12	2.13	5/8	1/2 - 13 UNC	2.94	0.94	1/8 - 27 NPT	12.31
YSHE-2.750-R	4.2500	1.38	2.5000	9.00	2.750	3.81	0.06	2 1/2 - 12	2.63	5/8	1/2 - 13 UNC	3.31	1.06	1/8 - 27 NPT	21.81

ADDITIONAL NOTES

Jam Nut & Lock Washer sets and lubrication fittings are included.

Specifications subject to change without notice.