

CONVEYOR PULLEYS

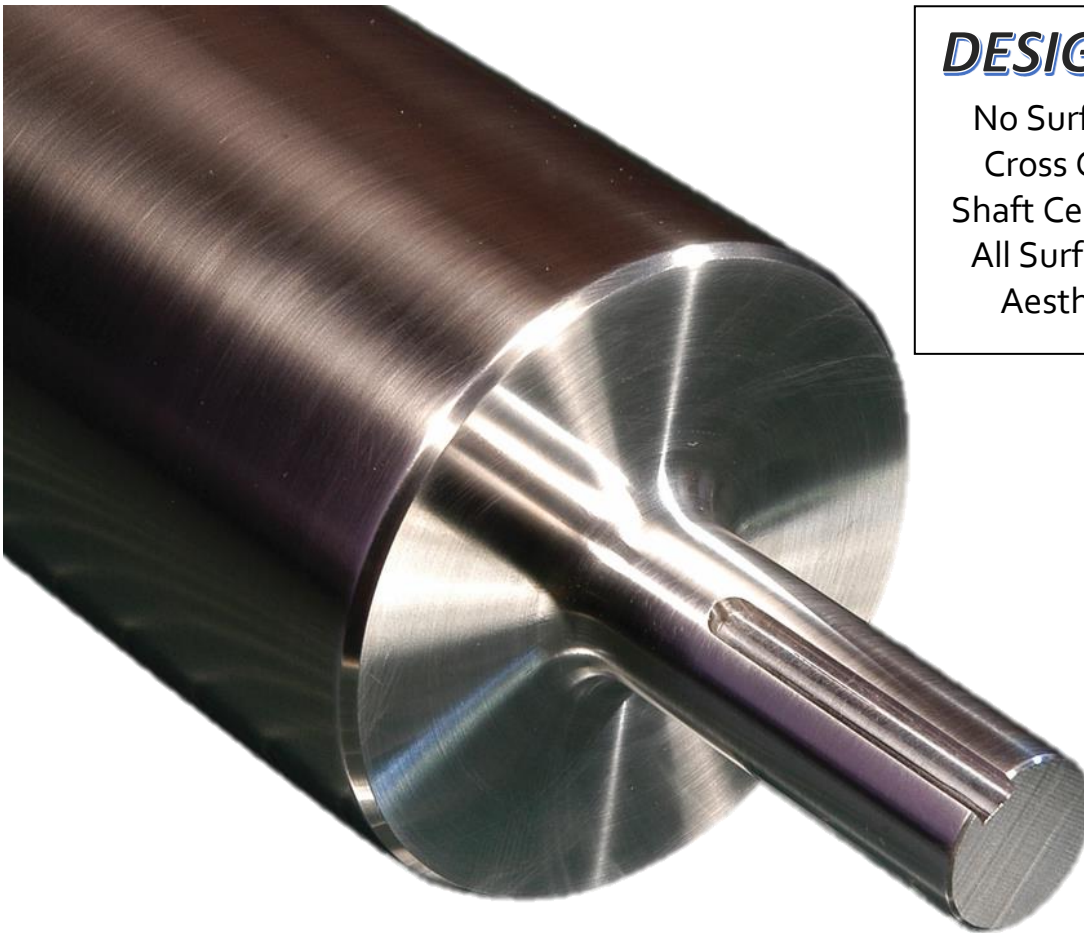
Stainless Steel – Sanitary Class



989.358.6149

www.pcimfg.com

Manufactured to meet 3A, USDA and FDA requirements for cleanliness, PCI® Sanitary Class pulleys offer a premium surface finish and intelligent construction for application success in strict sanitary environments. All steel surfaces are manufactured to a finish of 32 micro-inches or better and are free of imperfections such as scratches, nicks or pits. Pulley construction is designed with flush end disks to deter buildup of harmful bacteria and axles are welded to prohibit access of contaminants to internal cavities. Extreme care is taken to avoid cross-contamination of stainless steel surfaces with ferrous metals during the entire manufacturing process. The design, construction and care taken while manufacturing a PCI Sanitary Class pulley make it the highest grade and most expensive of the PCI stainless steel conveyor pulley classes.



DESIGN BENEFITS

- No Surface Imperfections
- Cross Contaminant Free
- Shaft Center Drills Removed
- All Surfaces are Machined
- Aesthetically Pleasing

CONSTRUCTION

304 Stainless Steel

SURFACE FINISHES

STAINLESS STEEL: 32 Micro-Inches (or better)

LAGGING: 64 Micro-Inches (or better)

END PLATE LOCATION

Flush with Pulley Ends

HUB STYLES AVAILABLE

Welded Shaft (*Type 1/Type A*)

CONVEYOR PULLEYS

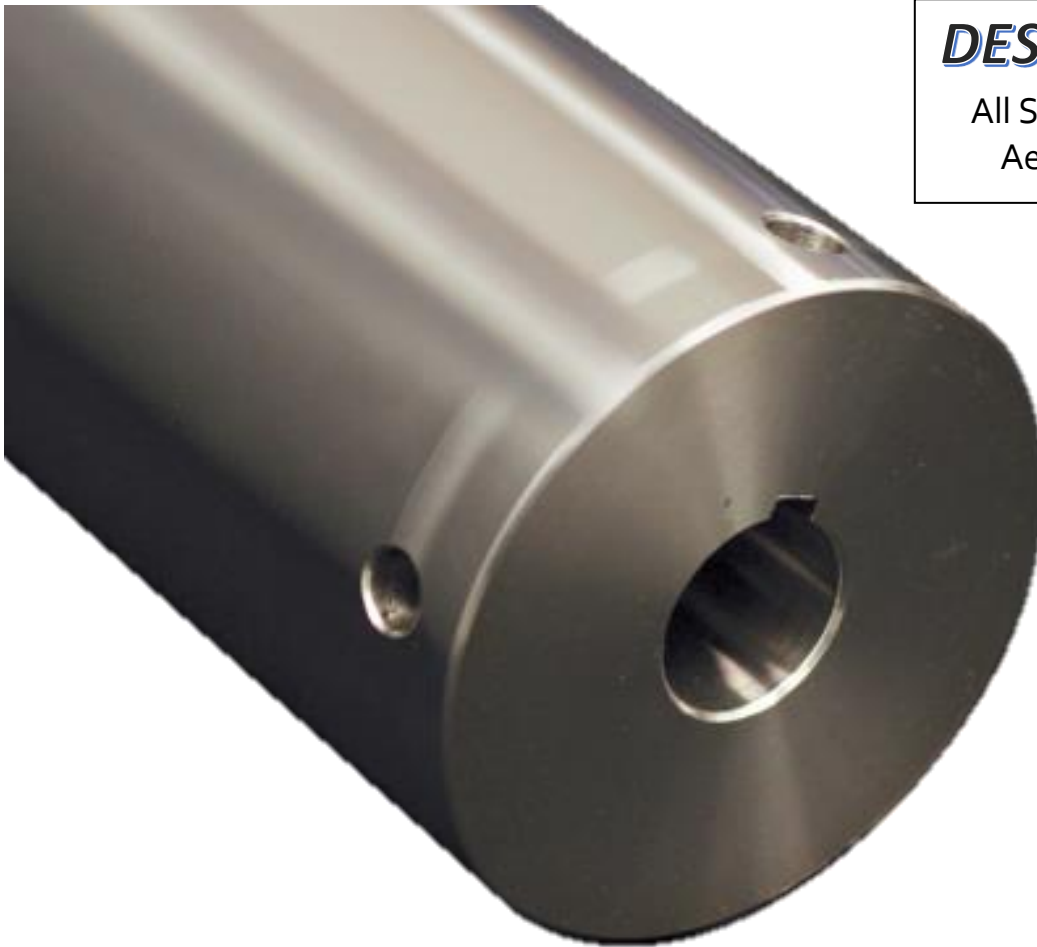
Stainless Steel – Super-Clean Class



989.358.6149

www.pcimfg.com

Manufactured to provide maximum cleaning efficiency and general aesthetics to the application, PCI® Super-Clean Class pulleys are intended for conveyor applications requiring the benefits of a fully machined pulley where USDA or FDA sanitary compliance is not required. Super-Clean pulleys are designed with a 125 micro-inch or better surface finish on all surfaces including weld fillets to improve removal of debris. End plates are flush with the pulley ends to minimize buildup of debris. Although offering a high grade finish, surfaces of a Super-Clean pulley may include imperfections such as pits, scratches or small pockets. Super-Clean pulleys offer an economical alternative to achieve the benefits of a fully machined surfaces of a sanitary class pulley.



DESIGN BENEFITS

All Surfaces are Machined
Aesthetically Pleasing

CONSTRUCTION

304 Stainless Steel

ALL SURFACE FINISHES

125 Micro-Inches (or better)

END PLATE LOCATION

Flush with Pulley Ends

(Keyed hubs may extend)

HUB STYLES AVAILABLE

Welded Shaft (*Type 1/Type A*)

Keyed Hubs (*Type 2/Type B/Type D*)

CONVEYOR PULLEYS

Stainless Steel – Easy-Clean Class



989.358.6149

www.pcimfg.com

Manufactured to provide benefits in cleaning efficiency to the application, PCI® Easy-Clean class pulleys are intended for conveyor applications where direct food contact is not a primary concern. Easy-Clean pulleys offer a 250 micro-inch or better surface finish on all surfaces including weld fillets to allow for easy removal of material from pulley surfaces and end plates flush with the pulley ends to minimize buildup of debris. Because of their intended use, surfaces may include imperfections such as pits, scratches or small pockets but are media treated to provide a uniform visual appearance. Easy-Clean class pulleys offer an economical solution for applications desiring some level of cleaning efficiency.



CONSTRUCTION

304 Stainless Steel

ALL SURFACE FINISHES

250 Micro-Inches (or better)

END PLATE LOCATION

Flush with Pulley Ends

(Keyed Hubs and Bearing Races may extend)

HUB STYLES AVAILABLE

Welded Shaft (*Type 1/Type A*)

Keyed Hubs (*Type 2/Type B/Type D*)

Internal Bearings (*Type 3/Type C*)

CONVEYOR PULLEYS

Stainless Steel – Extra-Value Class



989.358.6149

www.pcimfg.com

Designed to provide corrosion resistance and reduced magnetic properties to the intended application, PCI® Extra-Value Class pulleys are intended for conveyor applications where sanitary requirements are not a concern. Because of their intended use, this class of pulleys offers a minimum grade surface finish, welds in “as-welded” condition and end-plates recessed in the pulley ends. Pulleys in this class may have slight surface imperfections including pits, scratches and small pockets however, surfaces are media treated to provide a uniform visual appearance. Extra-Value class pulleys are available in all standard hub configurations and are the most economical of the PCI Stainless Steel conveyor pulley classes.



CONSTRUCTION

304 Stainless Steel

ALL SURFACE FINISHES

“As Fabricated”

END PLATE LOCATION

Recessed

HUB STYLES AVAILABLE

Plain Bore or Welded Shaft *(Type 1/Type A)*

Keyed Hubs *(Type 2/Type B/Type D)*

Internal Bearings *(Type 3/Type C)*

Welded Compression Hubs/Bushings *(Type 4)*

CONVEYOR PULLEYS

Stainless Steel – Class X



989.358.6149

www.pcimfg.com

PCI's dedication to creating a solution for every application drives our Class X product offering. The finish, construction and features of a Class X Pulley are custom designed every time to meet the individual needs of your unique application. If PCI hasn't already designed your solution, ask for a Class X solution!



CLASS "X" EXAMPLES INCLUDE:

De-Magnetization
Food Grade Lagging
Special Finishes (Knurling etc.)

Wing Pulleys
Super-Sanitary Designs
Your Next Solution.....

CONVEYOR PULLEYS

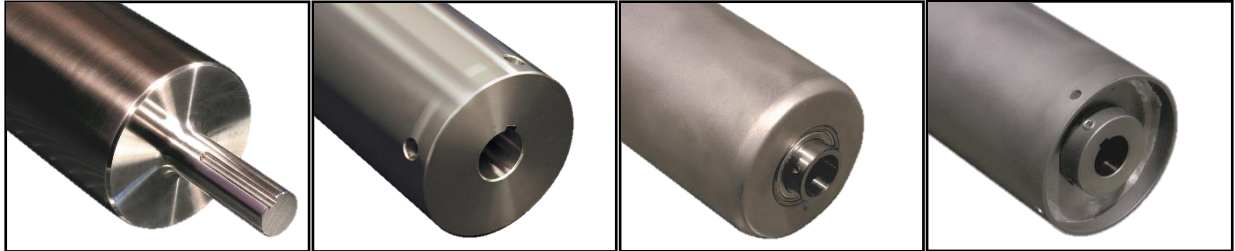


989.358.6149

www.pcimfg.com

Focus Flyer – Corrosion Resistant Pulleys

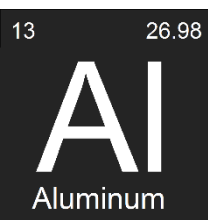
Selection of appropriate components plays a critical role in achieving ultimate success in conveyor design. Without the use of proper tools and training, this selection process can be cumbersome and time consuming for environments requiring stainless steel materials. To help simplify your selection process, PCI has developed four distinct classes of stainless steel conveyor pulleys that are designed to meet the requirements of a variety of applications. Our unique approach to stainless steel conveyor pulley design provides you with: *stainless steel selection and solutions simplified.*



	SANITARY	SUPER-CLEAN	EASY-CLEAN	EXTRA-VALUE
SURFACE FINISH	32	125	250	"As Fabricated"
304 STAINLESS	√	√	√	√
FLUSH END PLATES	√	√	√	
FULLY MACHINED	√	√		
MEDIA TREATED			√	√
HUB STYLES AVAILABLE	Welded Shaft	Welded Shaft Keyed Hubs	Welded Shaft Keyed Hubs Internal Bearings	Welded Shaft(Plain Bore) Keyed Hubs Internal Bearings Compression Hubs
COST	\$\$\$\$	\$\$\$	\$\$	\$

ALUMINUM *A Lighter Approach to Corrosion Resistance*

PCI Aluminum conveyor pulleys offer a corrosion resistant alternative to stainless steel while providing a couple of unique advantages:



LIGHTER WEIGHT: The density of aluminum is nearly one-third the density of steel, giving it a distinct advantage in applications where the weight of pulley construction is a concern.

LOWER COST: The price of aluminum material is normally between the cost of carbon steel and stainless steel making it an economical alternative to stainless steel when carbon steel isn't providing the required level of corrosion resistance.

PCI Aluminum conveyor pulleys are available in a range of diameters, construction thicknesses, and a couple hub styles. Please call us for selection assistance.