

LOAD BEARING ROLLER ASSEMBLIES



EXTREME DUTY & INDUSTRY SOLUTIONS



989.358.6148
www.pcimfg.com

LOAD BEARING ROLLER ASSEMBLIES EXTREME DUTY SOLUTIONS

Stainless Steel- 316

Track Rollers & XR Rollers

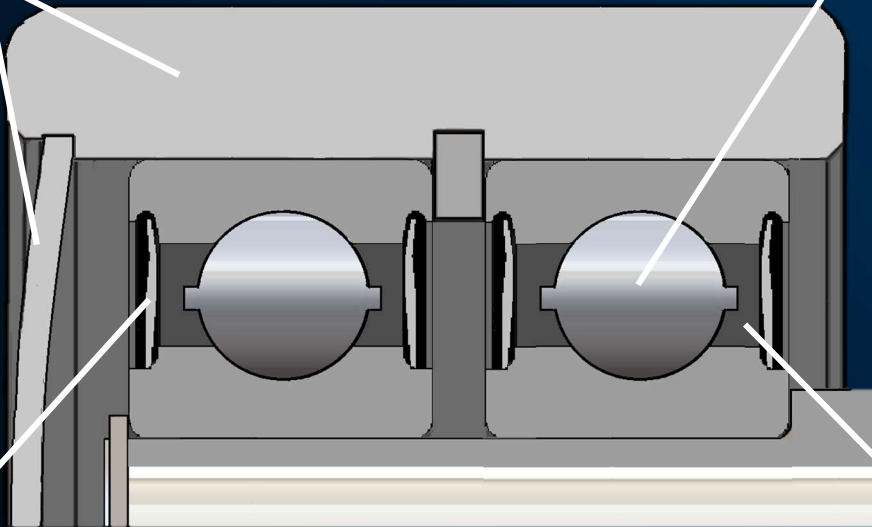
The Ultimate in Corrosion Resistance

316 STAINLESS STEEL ROLLER, STUD & DUST COVER*

Maximum corrosion resistance and added protection against direct spray and contamination.

440 STAINLESS STEEL PRECISION DEEP GROOVE BALL BEARINGS*

Optimum balance of corrosion resistance and dynamic load capacity.



FLUOROCARBON LIP SEALS

Maximizes protection of the bearing elements from high heat, chemicals and external contamination.

SYNTHETIC FOOD GRADE LUBRICANT

Food grade grease with resistance to chemicals and wash-out.

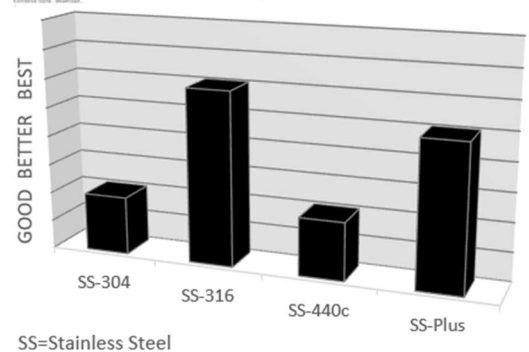
WHY USE PCI 316 STAINLESS STEEL ROLLERS?

PCI[®] utilizes 316 Stainless Steel materials for the exposed surfaces of this series. Most stainless cam follower products utilize 400 series stainless steel for the same surfaces. 316 Stainless has nearly 40% greater resistance to pitting corrosion than 400 series grades.

If corrosion resistance is your goal, PCI 316 Stainless Steel Track Rollers & XR Rollers are your engineered stainless solution.



STAINLESS STEEL CORROSION RESISTANCE



*Features dependent on size and style of unit. See specifications for details.

LOAD BEARING ROLLER ASSEMBLIES EXTREME DUTY SOLUTIONS

Stainless Steel "PLUS" Track Rollers & XR Rollers

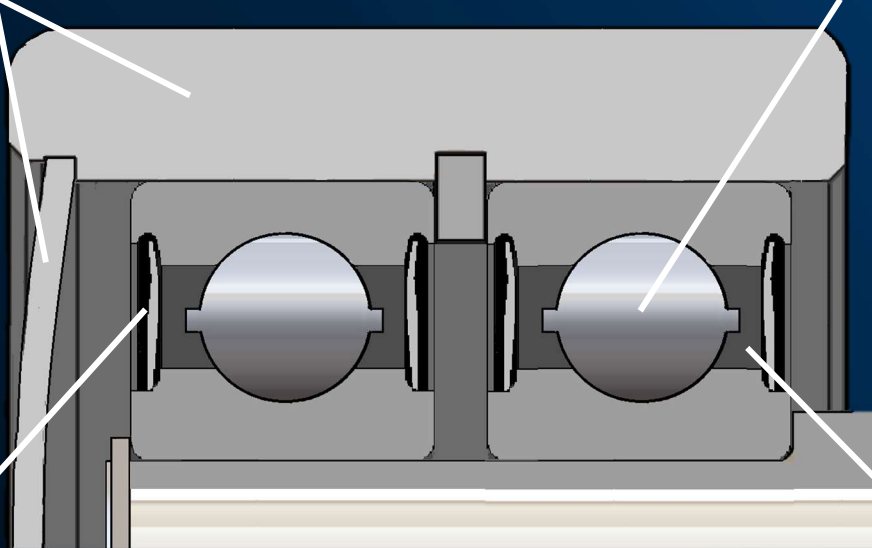
For Strength and Corrosion Resistance

"PLUS" STAINLESS STEEL ROLLER, HIGH STRENGTH STUD & DUST COVER*

High strength corrosion resistance and added protection against direct spray and contamination.

440 STAINLESS STEEL PRECISION DEEP GROOVE BALL BEARINGS*

Optimum balance of corrosion resistance and dynamic load capacity.



FLUOROCARBON LIP SEALS

Maximizes protection of the bearing elements from high heat, chemicals and external contamination.

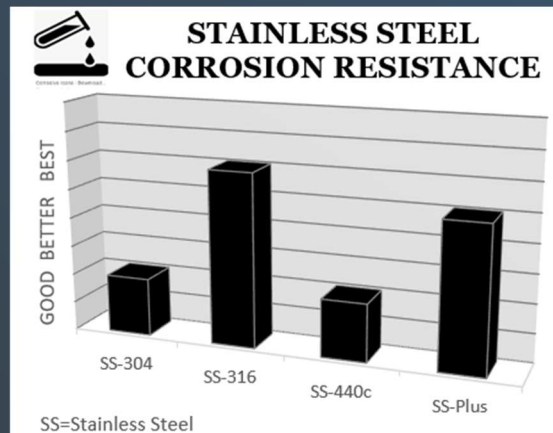
SYNTHETIC FOOD GRADE LUBRICANT

Food grade grease with resistance to chemicals and wash-out.

WHY USE PCI STAINLESS STEEL "PLUS" SERIES ROLLERS?

PCI® Stainless Steel Plus series is manufactured with high strength stud materials, uses 440c stainless steel materials PLUS proprietary heat treatment roller bodies to withstand higher loads.

If superior load capacity while maintaining corrosion resistance is your goal, PCI Plus series Stainless Steel Track Rollers & XR Rollers are your engineered stainless steel solution.



*Features dependent on size and style of unit. See specifications for details.

LOAD BEARING ROLLER ASSEMBLIES EXTREME DUTY SOLUTIONS

Stainless Steel Class X

Track Rollers & XR

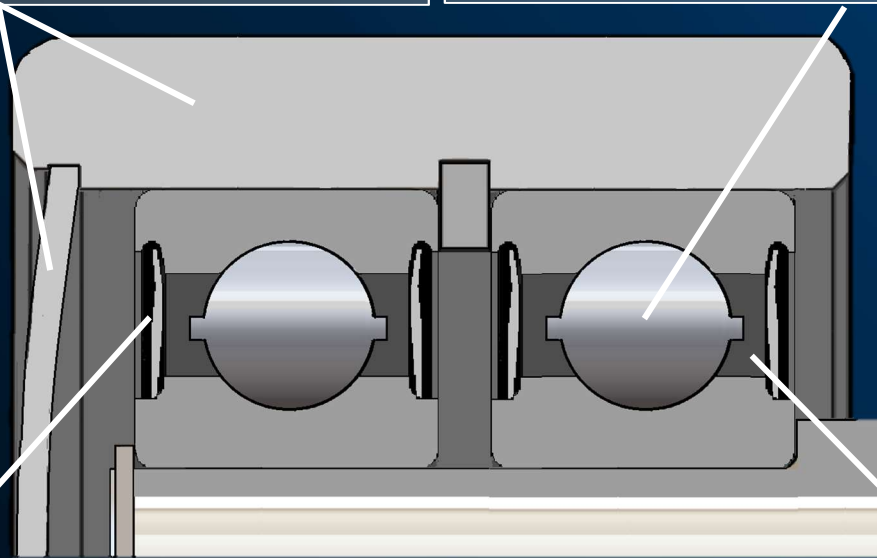
Custom Built For Your Application

CUSTOM DESIGNED ROLLER, STUD & DUST COVER*

Corrosion resistance and protection against direct spray and contamination to meet your budget.

PRECISION BEARINGS* PER YOUR REQUEST

Optimum balance of corrosion resistance and dynamic load capacity.



SEALS TO MEET YOUR NEEDS

Maximizes protection of the bearing elements from high heat, chemicals and external contamination.

LUBRICANT PER SPECIFICATION

Grease provided with resistance to chemicals and wash-out per your requirements.

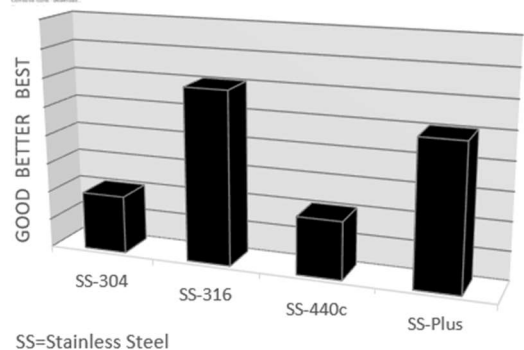
WHY USE PCI STAINLESS STEEL CLASS X ROLLERS?

PCI's dedication to creating a solution for every application drives our Class X product offering. The materials, construction and features of a Class X Roller are custom designed every time to meet the individual needs of your unique application.

If PCI hasn't already designed your solution, ask for a Class X solution!



STAINLESS STEEL CORROSION RESISTANCE



*Features dependent on size and style of unit. See specifications for details.

LOAD BEARING ROLLER ASSEMBLIES EXTREME DUTY SOLUTIONS

Non-Metallic Track Rollers & XR Rollers

Non-Sparking, Quiet Performance

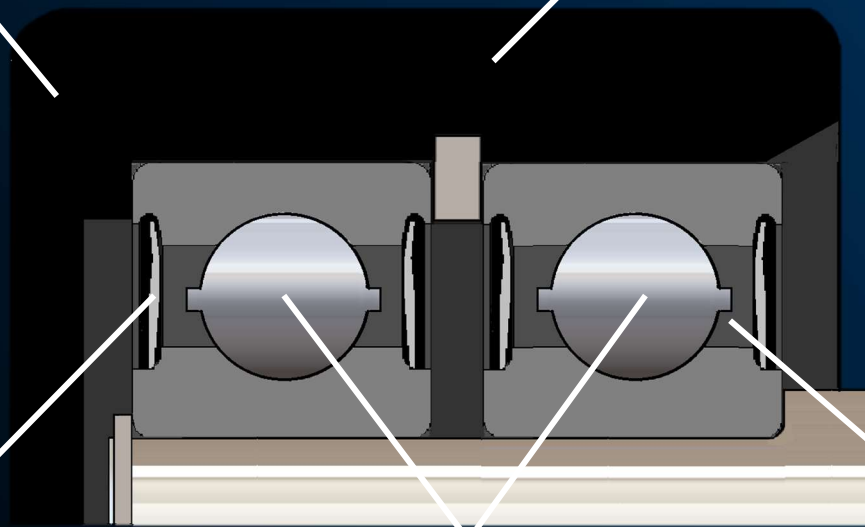
ONE PIECE SOLID END CAP DESIGN*

Solid protection of the bearing elements from external contaminants.

NON-METALLIC ROLLER BODY

Minimizes Rolling Noise
Reduces Track Wear
Eliminates Need for
Track Lubrication

Reduces Rolling Resistance
FDA Compliant Material
Reduces Likelihood of
Metal-on-Metal Sparking



RUBBER LIP SEALS

Maximizes protection of the bearing elements from external contamination.

PRECISION DEEP GROOVE BALL BEARINGS

Dependable performance under high speeds and combination loads.

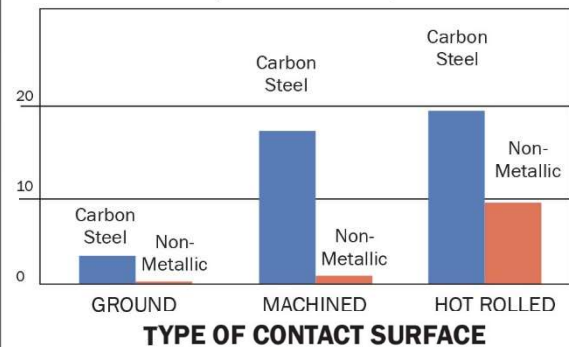
SYNTHETIC LUBRICANT

High performance grease resistant to break down to minimize downtime.

HOW QUIET ARE PCI NON-METALLIC TRACK ROLLERS?

PCI's Non-Metallic roller body design absorbs vibration and reduces the likelihood of metal on metal sparking to provide reliable Non-Sparking, Quiet Performance. PCI® Non-Metallic Rollers are more than 10 dBa quieter than their metallic counterparts – that's a 50% reduction in sound over traditional carbon steel Track Roller and Cam Follower products.

Operational Noise Index (as measured in dBa)



*Features dependent on size and style of unit. See specifications for details.

LOAD BEARING ROLLER ASSEMBLIES EXTREME DUTY SOLUTIONS

High Temperature Track Rollers & XR Rollers

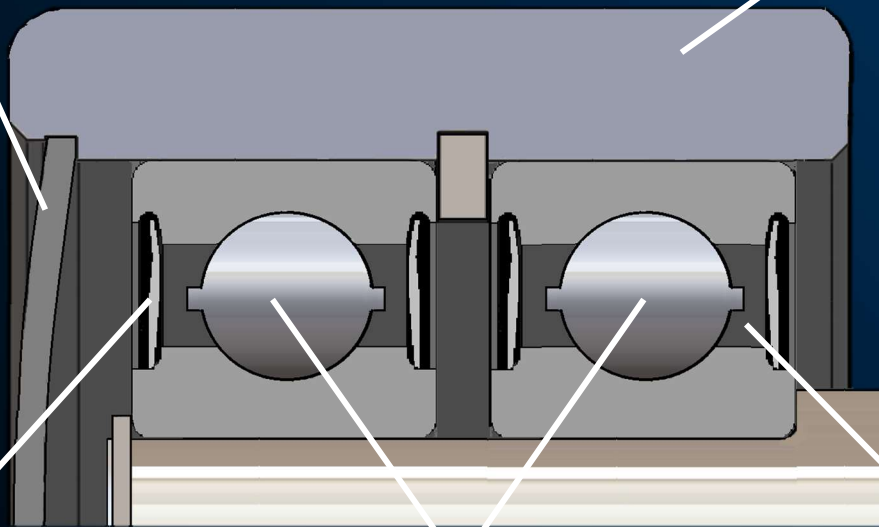
Defeat Extreme Heat – The 350 °F Solution

TIGHT FIT STAINLESS STEEL COVER*

Maximum protection against direct spray and contamination

CASE HARDENED ROLLER BODY

Maintains the integrity of the assembly by preventing pre-mature fracture under shock loads.



FLUOROCARBON LIP SEALS

Lasting protection of the bearing elements in high temperatures.

PRECISION HIGH TEMPERATURE DEEP GROOVE BALL BEARINGS

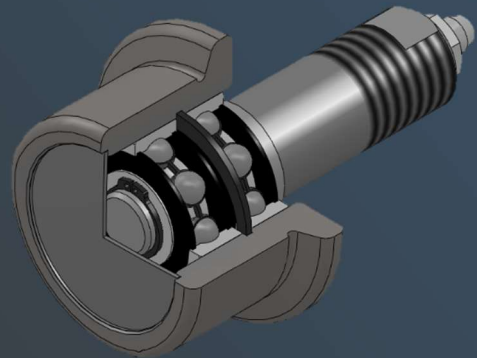
Performance under high speeds and combination loads in a high temperature environment.

PREMIUM HIGH TEMP LUBRICANT

Performance in applications up to 350 °F (Continuous)

EXTEND PERFORMANCE WITH RELUBE

PCI High Temperature Rollers are available IN STOCK with regreasing provisions to maximize life in your demanding application. PCI High Temperature Rollers are supplied with wrench flats for easy installation and a readily accessible grease fitting located in the end of the stud for ease of maintenance. Add a “-R” suffix to the part number to Replenish & ReUse...Relube



*Features dependent on size and style of unit. See specifications for details.

LOAD BEARING ROLLER ASSEMBLIES EXTREME DUTY SOLUTIONS

High Temperature Track Rollers & XR Rollers

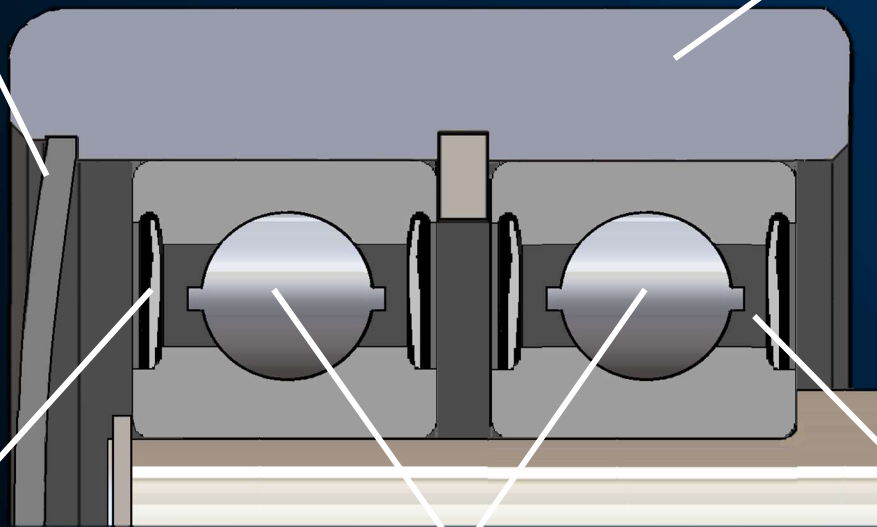
Defeat Extreme Heat – The 660 °F Solution

TIGHT FIT STAINLESS STEEL COVER*

Maximum protection against direct spray and contamination

CASE HARDENED ROLLER BODY

Maintains the integrity of the assembly by preventing pre-mature fracture under shock loads.



STEEL SHIELDS

Protection of the bearing elements in extreme temperatures.

PRECISION HIGH TEMP BALL OR TAPERED ROLLER BEARINGS

Performance under low speeds and combination loads in a high temperature environment.

HIGH TEMP SOLID LUBRICANT

Performance for up to 660 °F (Continuous) with no relubrication required.

NO RELUBRICATION REQUIRED

PCI incorporates Cobra Solid Lubricant™ (CSL) - a mixture of graphite and binders creating a solid lubricant in this offering. The solidified mixture will fill the entire space between the races, rolling elements and cage to prevent metal to metal contact. CSL prevents contaminants from entering the bearing while providing a low coefficient of friction. Unlike petroleum-based lubricants, CSL cannot be washed out by steam or other common solvents, acids, or alkalis except under direct high-pressure. CSL will not drip or fling, is environmentally clean and may substantially increase bearing life and eliminate relubrication maintenance – even at high temperatures!

Cobra Solid Lubricant™ (CSL) is a trademark of Unique Technologies Associates

**Features dependent on size and style of unit. See specifications for details.*

**LOAD BEARING
ROLLER ASSEMBLIES**



Solutions Through Innovation

WASTE & REFUSE SOLUTIONS



Comparable Replacements for
Trash Truck and Recycling Equipment

989.358.6148
www.pclmfg.com

**LOAD BEARING
ROLLER ASSEMBLIES**



LUMBER & SAWMILL SOLUTIONS



Comparable Replacements for
Lumber, Sawmill and Pressure Treatment Equipment

989.358.6148
www.pclmfg.com

**LOAD BEARING
ROLLER ASSEMBLIES**



OIL & GAS SOLUTIONS



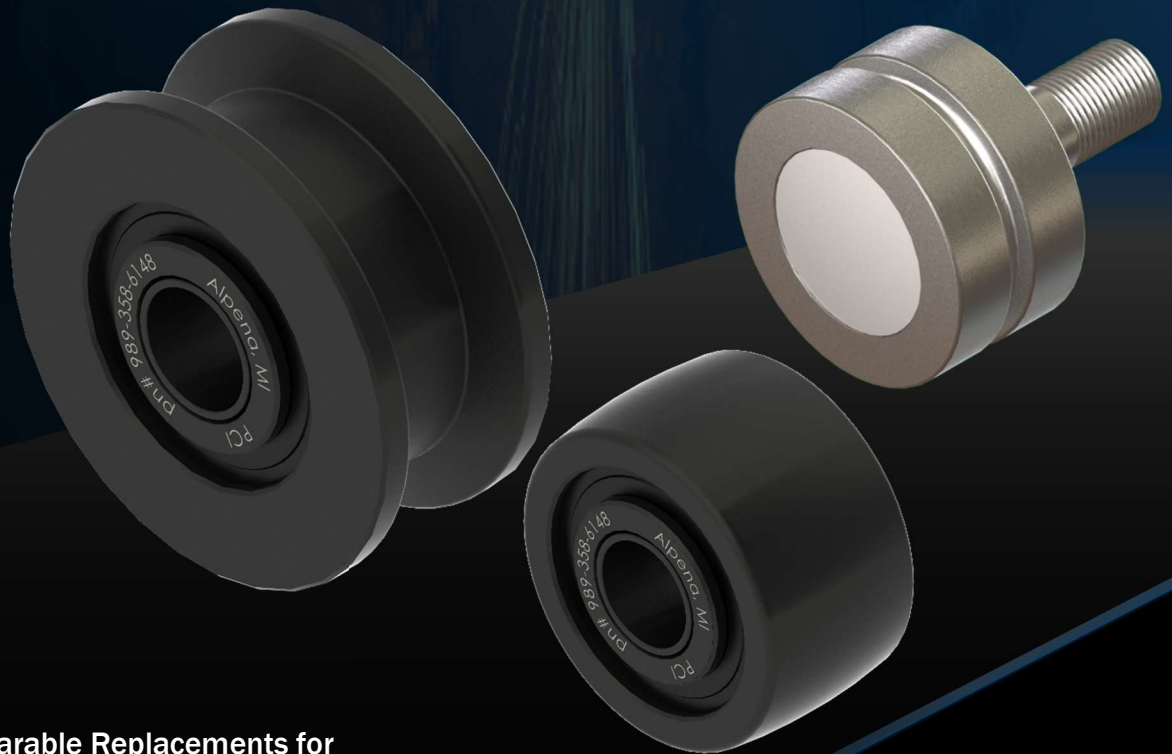
Comparable Replacements for
#30158767-04 / F76105 - 4" Diameter Top Drive Roller
#30155438 / F76139 - 6" Diameter Top Drive Roller

989.358.6148
www.pclmfg.com

**LOAD BEARING
ROLLER ASSEMBLIES**



STEEL & METAL SOLUTIONS



**Comparable Replacements for
Steel Mill, Metal Processing and Treatment Equipment**

**989.358.6148
www.pclmfg.com**



LOAD BEARING ROLLER ASSEMBLIES SPECIALS & CUSTOMS

Solutions Through Innovation for More than 35 Years!

Can't Find What
You Need?

Call PCI
(989) 358-6148

For additional information and to explore
all the choices for your solution,
contact PCI - ProCal Innovations, LLC.
or visit us on the web at
www.pcimfg.com.



PCI is your trusted advisor - providing you with:

PRODUCT KNOWLEDGE

PCI has a thorough understanding of what it takes to manufacture a successful product. PCI provides you with pre-engineered products, modified units or products engineered specifically for your needs.

PCI provides you the maximum number of viable choices, so you can make the best decision for your economic and delivery requirements.

APPLICATION ASSISTANCE

Our experience and market research enables PCI to offer unique market solutions that fulfill industry requirements including:

- food processing
- marine
- mining
- petrochemical
- lumber, sawmill, wood
- steel and metal treatment

QUICKEST DELIVERY

Along with an innovative design, a solution needs desirable delivery. PCI secures your application solution when you need it.

Pre-Engineered - IN STOCK
Industry Solutions - IN STOCK
Plus, Industry Leading Delivery for
Custom units including
EXPEDITES